

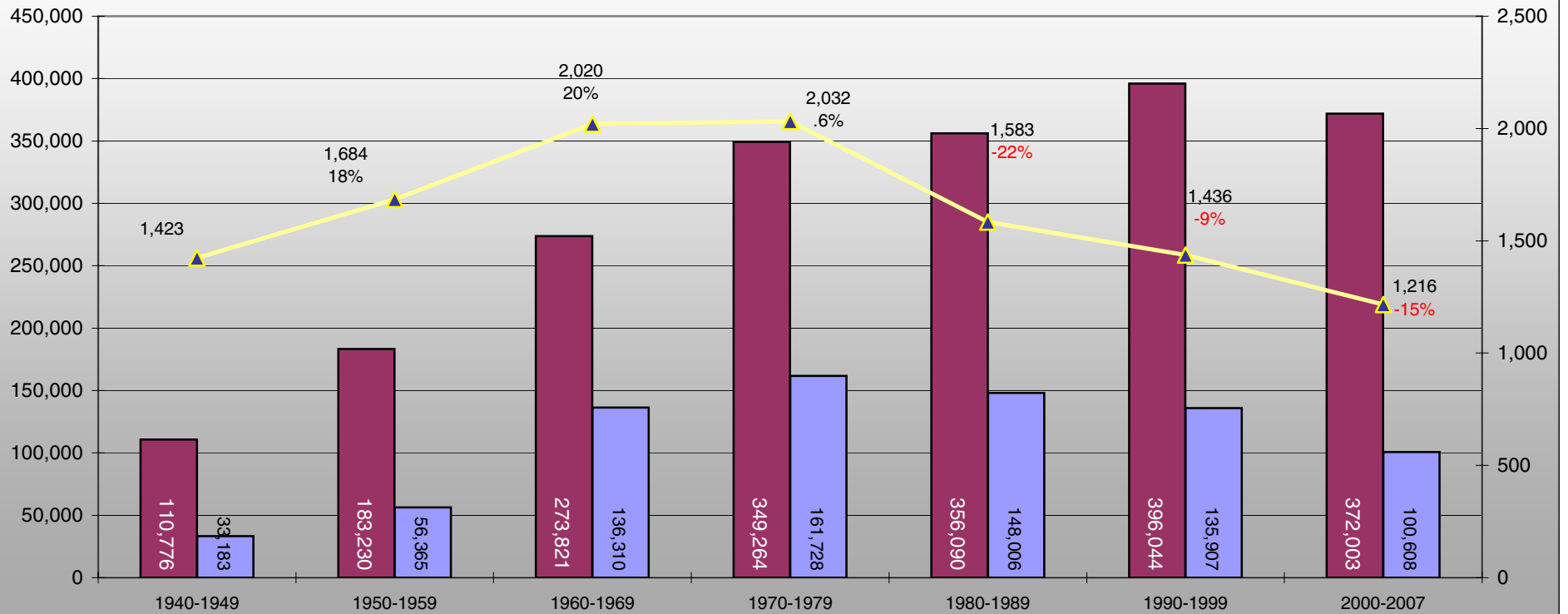
1940-2007 MICHIGAN TRANSPORTATION HISTORY



Fact: Since the 1960's:
Fatalities Decreased 40%
Injuries Decreased 26%
Crashes Increased 36%

1940-2007 Ten Year Averages

■ Avg. Crashes ■ Avg. Injuries ▲ Avg. Fatalities

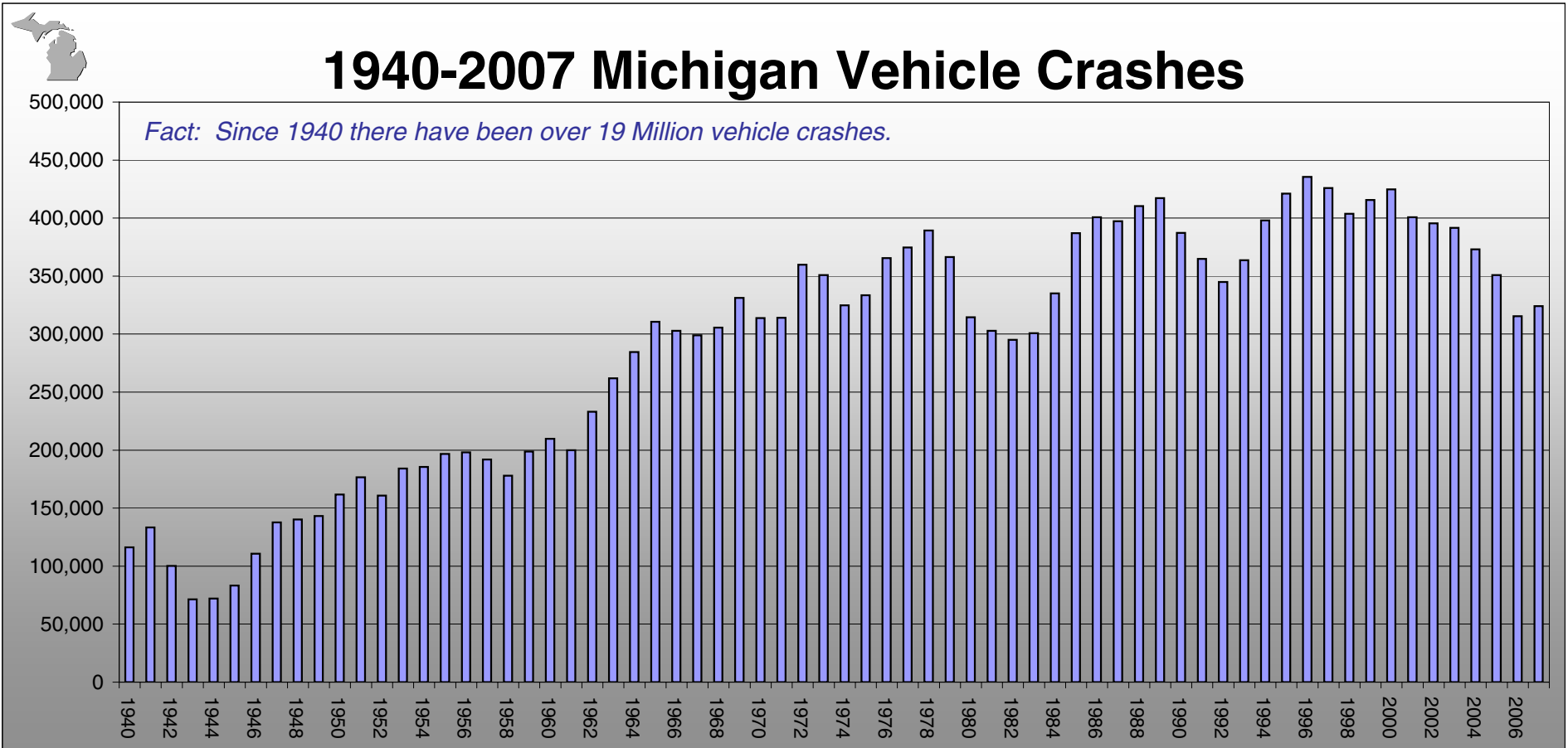


1940-2007 MICHIGAN TRAFFIC CRASH HISTORY

Year	Crashes Per			Fatalities Per				Injuries Per				Reg.			
	Crashes	Crashes Per 1k Pop	Crashes Per 1k Reg. Veh.	Fatalities	Fatalities Per 10k Pop	Fatalities Per 10k Reg. Veh.	Fatalities Per 100m VMT	Injuries	Injuries Per 10k Pop	Injuries Per 10k Reg. Veh.	Injuries Per 100m VMT	Pop.	Vehicles	VMT	
1940	116,154	21.9	72.6	7.7	1,730	3.26	10.81	11.46	34,247	64.6	214.0	226.8	5.3	1.6	15.1
1941	133,236	24.7	78.4	7.8	2,133	3.95	12.55	12.55	40,708	75.4	239.5	239.5	5.4	1.7	17.0
1942	100,125	18.2	62.6	7.2	1,325	2.41	8.28	9.53	28,967	52.7	181.0	208.4	5.5	1.6	13.9
1943	71,450	13.2	47.6	6.8	992	1.84	6.61	9.45	21,988	40.7	146.6	209.4	5.4	1.5	10.5
1944	72,013	13.1	48.0	6.7	1,034	1.88	6.89	9.66	23,401	42.5	156.0	218.7	5.5	1.5	10.7
1945	83,160	15.1	55.4	7.0	1,150	2.09	7.67	9.66	27,755	50.5	185.0	233.2	5.5	1.5	11.9
1946	110,631	18.8	69.1	6.9	1,470	2.50	9.19	9.13	34,479	58.5	215.5	214.2	5.9	1.6	16.1
1947	137,619	22.7	76.5	7.8	1,447	2.39	8.04	8.22	38,195	63.0	212.2	217.0	6.1	1.8	17.6
1948	140,172	22.6	70.1	7.3	1,512	2.44	7.56	7.92	40,892	66.0	204.5	214.1	6.2	2.0	19.1
1949	143,197	22.7	65.1	7.2	1,441	2.29	6.55	7.24	41,197	65.4	187.3	207.0	6.3	2.2	19.9
1950	161,750	25.3	67.4	7.5	1,605	2.51	6.69	7.47	45,734	71.5	190.6	212.7	6.4	2.4	21.5
1951	176,587	27.2	67.9	7.8	1,640	2.52	6.31	7.26	48,418	74.5	186.2	214.2	6.5	2.6	22.6
1952	160,829	24.4	61.9	7.0	1,736	2.63	6.68	7.52	49,119	74.4	188.9	212.6	6.6	2.6	23.1
1953	184,174	27.1	65.8	7.3	1,905	2.80	6.80	7.53	57,834	85.1	206.6	228.6	6.8	2.8	25.3
1954	185,534	26.5	64.0	7.1	1,793	2.56	6.18	6.90	56,444	80.6	194.6	217.1	7.0	2.9	26.0
1955	196,812	27.0	63.5	7.0	2,016	2.76	6.50	7.15	62,234	85.3	200.8	220.7	7.3	3.1	28.2
1956	197,995	26.4	61.9	7.0	1,746	2.33	5.46	6.15	61,158	81.5	191.1	215.3	7.5	3.2	28.4
1957	191,915	25.3	58.2	6.6	1,548	2.04	4.69	5.30	60,067	79.0	182.0	205.7	7.6	3.3	29.2
1958	177,934	23.1	55.6	6.1	1,382	1.79	4.32	4.70	57,767	75.0	180.5	196.5	7.7	3.2	29.4
1959	198,771	25.5	60.2	6.6	1,473	1.89	4.46	4.89	64,873	83.2	196.6	215.5	7.8	3.3	30.1
1960	209,724	26.9	61.7	6.6	1,604	2.06	4.72	5.04	91,026	116.7	267.7	286.2	7.8	3.4	31.8
1961	199,973	25.3	58.8	6.2	1,567	1.98	4.61	4.88	93,350	118.2	274.6	290.8	7.9	3.4	32.1
1962	233,078	29.5	66.6	6.8	1,574	1.99	4.50	4.56	108,143	136.9	309.0	313.5	7.9	3.5	34.5
1963	261,794	32.7	72.7	7.2	1,887	2.36	5.24	5.18	126,896	158.6	352.5	348.6	8.0	3.6	36.4
1964	284,444	34.7	74.9	7.4	2,122	2.59	5.58	5.50	144,623	176.4	380.6	374.7	8.2	3.8	38.6
1965	310,598	37.4	75.8	7.6	2,136	2.57	5.21	5.24	155,258	187.1	378.7	380.5	8.3	4.1	40.8
1966	302,880	35.6	73.9	6.9	2,298	2.70	5.60	5.23	156,694	184.3	382.2	356.9	8.5	4.1	43.9
1967	299,004	34.8	71.2	6.6	2,137	2.48	5.09	4.75	151,297	175.9	360.2	336.2	8.6	4.2	45.0
1968	305,495	35.1	71.0	6.4	2,392	2.75	5.56	4.98	160,413	184.4	373.1	334.2	8.7	4.3	48.0
1969	331,223	37.6	72.0	6.6	2,487	2.83	5.41	4.96	175,400	199.3	381.3	350.1	8.8	4.6	50.1
1970	313,715	35.6	66.7	5.9	2,177	2.47	4.63	4.10	161,719	183.8	344.1	304.6	8.8	4.7	53.1
1971	314,015	35.3	65.4	5.7	2,152	2.42	4.48	3.88	157,664	177.2	328.5	284.1	8.9	4.8	55.5
1972	359,745	40.0	69.2	6.2	2,258	2.51	4.34	3.91	178,929	198.8	344.1	309.6	9.0	5.2	57.8
1973	350,864	38.6	65.0	6.0	2,213	2.43	4.10	3.79	169,485	186.2	313.9	290.2	9.1	5.4	58.4
1974	324,763	35.7	57.0	5.8	1,875	2.06	3.29	3.37	141,132	155.1	247.6	253.4	9.1	5.7	55.7
1975	333,560	36.7	58.5	5.9	1,811	1.99	3.18	3.22	147,299	161.9	258.4	262.1	9.1	5.7	56.2
1976	365,600	40.2	62.0	6.0	1,955	2.15	3.31	3.19	162,894	179.0	276.1	265.7	9.1	5.9	61.3
1977	374,751	40.7	61.4	5.8	1,950	2.12	3.20	3.01	166,389	180.9	272.8	256.8	9.2	6.1	64.8
1978	389,193	42.3	60.8	5.8	2,076	2.26	3.24	3.08	169,202	183.9	264.4	251.4	9.2	6.4	67.3
1979	366,435	39.8	56.4	5.7	1,849	2.01	2.84	2.85	162,571	176.7	250.1	250.9	9.2	6.5	64.8
1980	314,594	33.8	47.7	5.1	1,774	1.91	2.69	2.90	144,972	155.9	219.7	237.3	9.3	6.6	61.1
1981	302,831	32.9	49.6	4.9	1,589	1.73	2.60	2.56	136,455	148.3	223.7	220.1	9.2	6.1	62.0
1982	294,971	32.4	46.1	4.8	1,417	1.56	2.21	2.31	130,061	142.9	203.2	212.2	9.1	6.4	61.3
1983	300,797	33.4	47.0	4.7	1,331	1.48	2.08	2.10	135,811	150.9	212.2	213.9	9.0	6.4	63.5
1984	335,193	37.2	51.6	5.1	1,556	1.73	2.39	2.37	150,740	167.5	231.9	229.4	9.0	6.5	65.7
1985	386,904	42.5	56.9	5.7	1,569	1.72	2.31	2.29	157,417	173.0	231.5	230.1	9.1	6.8	68.4
1986	400,694	44.0	57.2	5.7	1,632	1.79	2.33	2.31	158,032	173.7	225.8	223.8	9.1	7.0	70.6
1987	397,224	43.2	55.9	5.2	1,632	1.77	2.30	2.16	156,318	169.9	220.2	206.5	9.2	7.1	75.7
1988	410,437	44.6	57.0	5.3	1,704	1.85	2.37	2.19	155,713	169.3	216.3	200.4	9.2	7.2	77.7
1989	417,252	44.9	58.0	5.2	1,630	1.75	2.26	2.04	154,537	166.2	214.6	193.4	9.3	7.2	79.9
1990	387,180	41.6	53.0	4.8	1,563	1.68	2.14	1.92	145,179	156.1	198.9	178.8	9.3	7.3	81.2
1991	364,847	39.2	50.0	4.5	1,425	1.53	1.95	1.74	135,830	146.1	186.1	165.8	9.3	7.3	81.9
1992	344,942	36.7	46.6	4.1	1,300	1.38	1.76	1.55	118,727	126.3	160.4	141.3	9.4	7.4	84.0
1993	363,636	38.3	48.5	4.2	1,414	1.49	1.88	1.65	134,548	141.6	179.4	157.0	9.5	7.5	85.7
1994	398,050	41.9	52.4	4.7	1,419	1.49	1.87	1.66	142,200	149.7	187.1	166.1	9.5	7.6	85.6
1995	421,073	43.9	54.7	4.9	1,537	1.60	2.00	1.79	146,303	152.4	190.0	170.7	9.6	7.7	85.7
1996	435,477	45.4	53.8	5.0	1,505	1.57	1.86	1.72	142,553	148.5	176.0	162.5	9.6	8.1	87.7
1997	425,793	43.4	52.6	4.8	1,446	1.48	1.79	1.62	137,548	140.4	169.8	154.2	9.8	8.1	89.2
1998	403,766	41.2	49.2	4.4	1,367	1.39	1.67	1.49	131,578	134.3	160.5	143.6	9.8	8.2	91.6
1999	415,675	42.0	48.3	4.5	1,386	1.40	1.61	1.49	124,601	125.9	144.9	133.8	9.9	8.6	93.1
2000	424,852	42.9	48.3	4.5	1,382	1.40	1.57	1.46	121,826	123.1	138.4	128.4	9.9	8.8	94.9
2001	400,813	40.1	45.0	4.2	1,328	1.33	1.49	1.38	112,294	112.3	126.2	116.5	10.0	8.9	96.4
2002	395,515	39.6	43.9	4.0	1,279	1.28	1.42	1.30	112,484	112.5	125.0	114.5	10.0	9.0	98.2
2003	391,485	38.8	43.0	3.9	1,283	1.27	1.41	1.28	105,555	104.7	116.0	105.3	10.08	9.1	100.2
2004	373,028	36.9	41.0	3.7	1,159	1.15	1.27	1.14	99,680	98.6	109.5	97.9	10.11	9.1	101.8
2005	350,838	34.7	37.7	3.4	1,129	1.12	1.21	1.09	90,510	89.4	97.3	87.7	10.12	9.3	103.2
2006	315,322	31.2	33.2	3.0	1,084	1.07	1.14	1.04	81,942	81.1	86.3	78.8	10.10	9.5	104.0
2007	324,174	32.2	38.6	3.1	1,084	1.08	1.29	1.0	80,576	80.0	95.9	77.0	10.07	8.4	104.6
2008															
2009															

Population=Millions
Reg. Vehicles=Millions
VMT=Billions

1940-2007 MICHIGAN TRANSPORTATION HISTORY

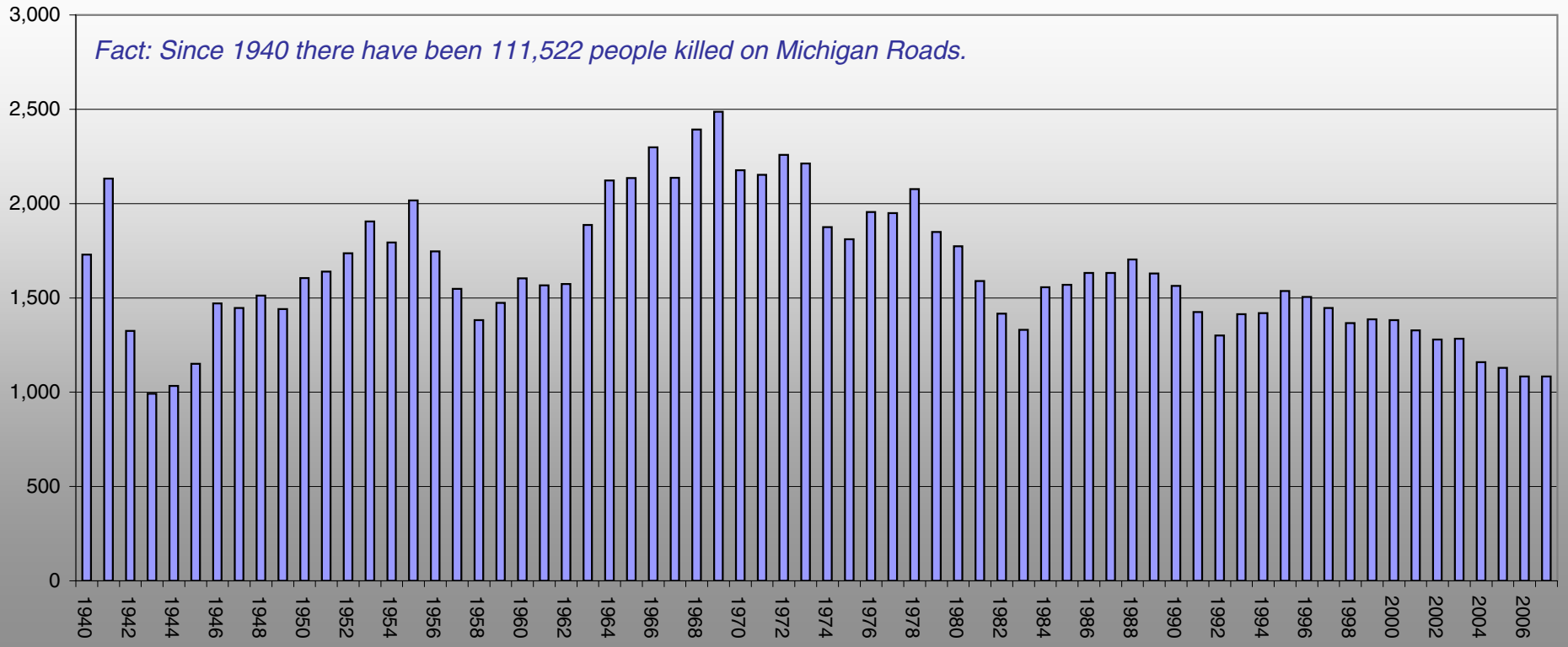


1940-2007 MICHIGAN TRANSPORTATION HISTORY



1940-2007 Michigan Vehicle Fatalities

Fact: Since 1940 there have been 111,522 people killed on Michigan Roads.

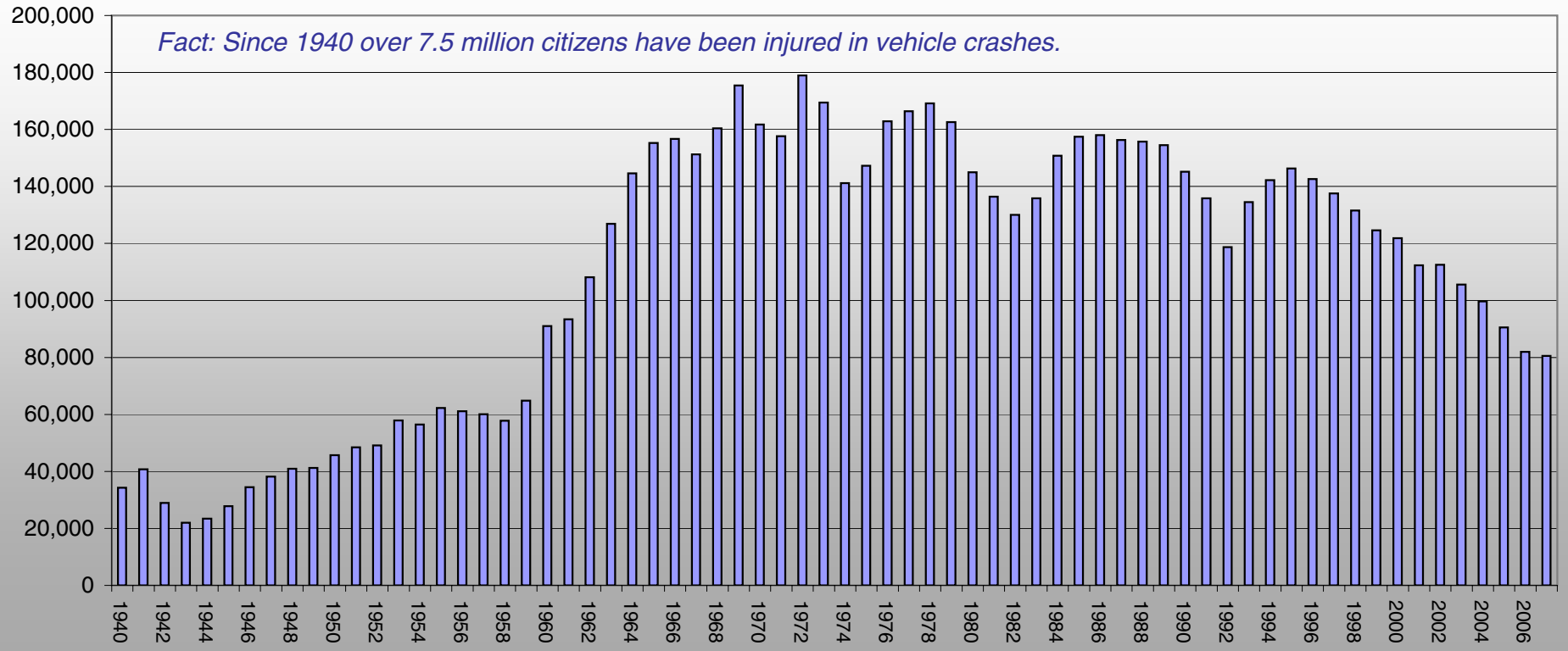


1940-2007 MICHIGAN TRANSPORTATION HISTORY



1940-2007 Michigan Vehicle Injuries

Fact: Since 1940 over 7.5 million citizens have been injured in vehicle crashes.

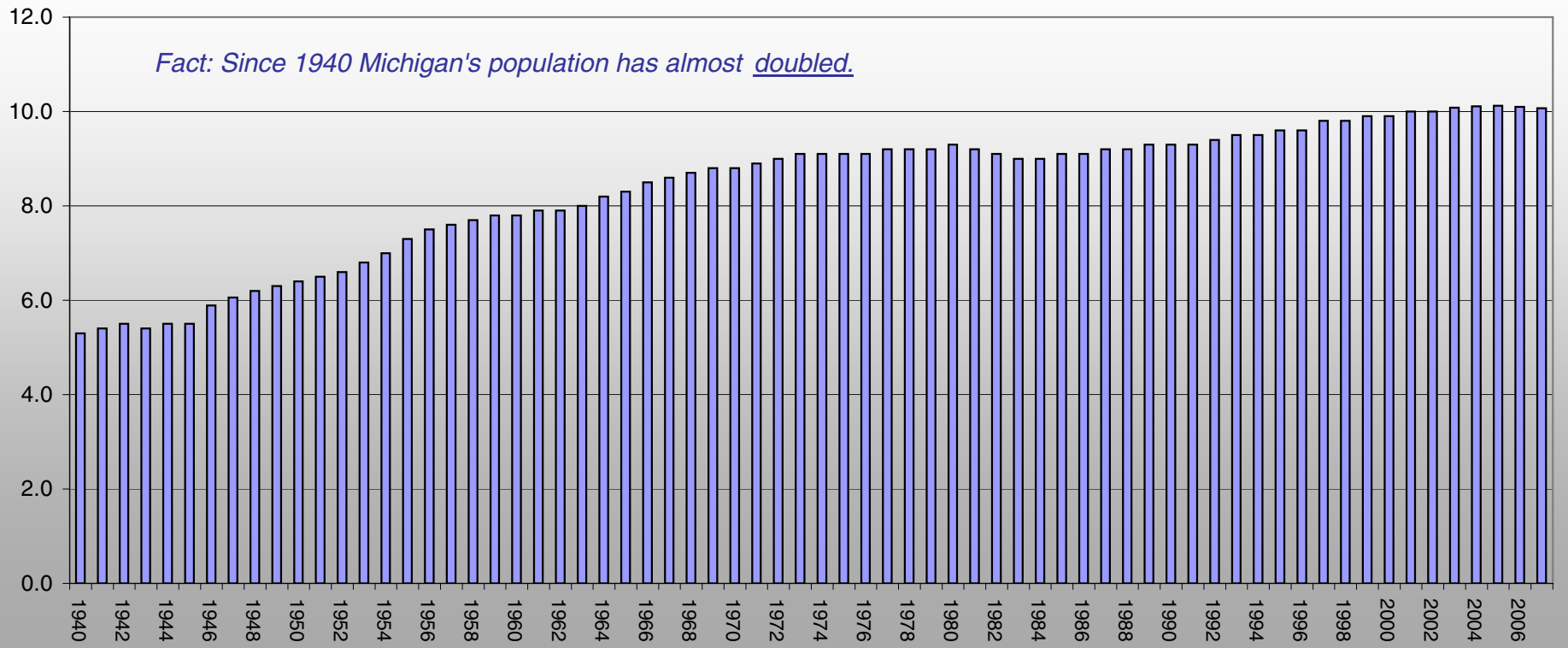


1940-2007 MICHIGAN TRANSPORTATION HISTORY



1940-2007 Michigan Population (millions)

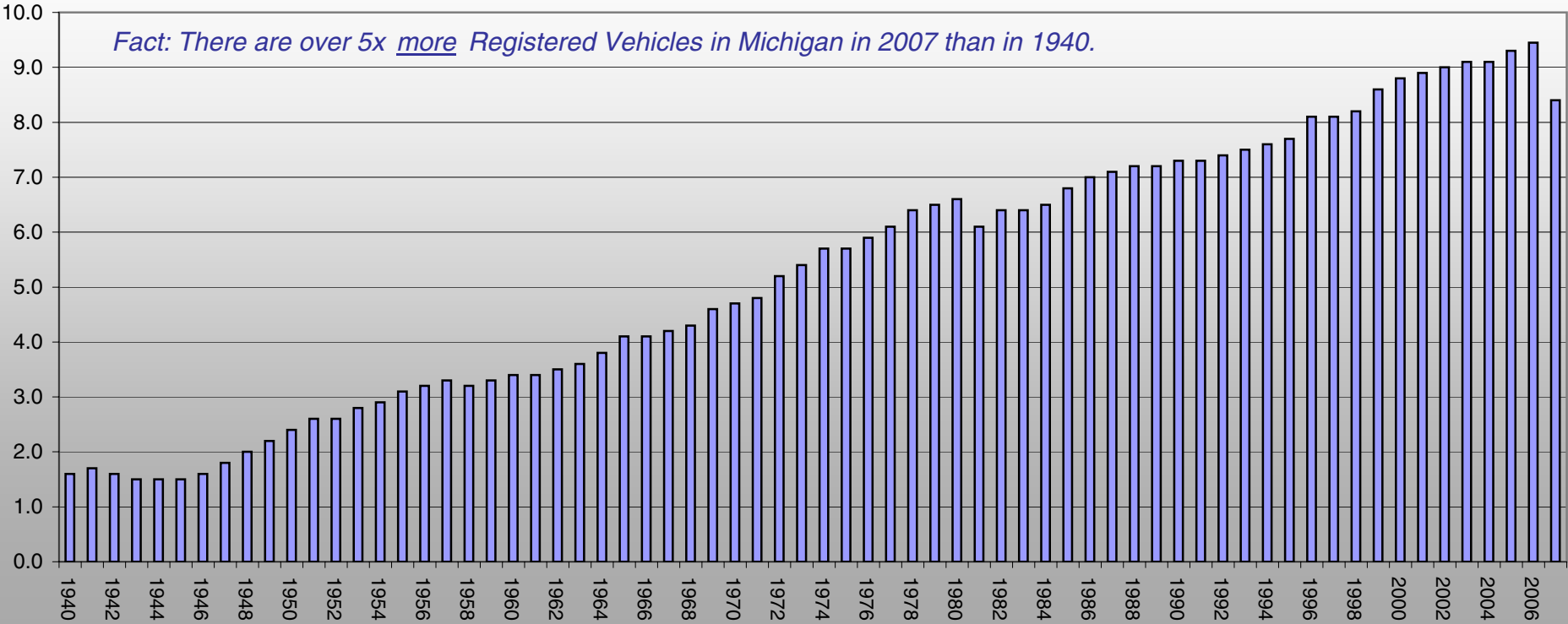
Fact: Since 1940 Michigan's population has almost doubled.



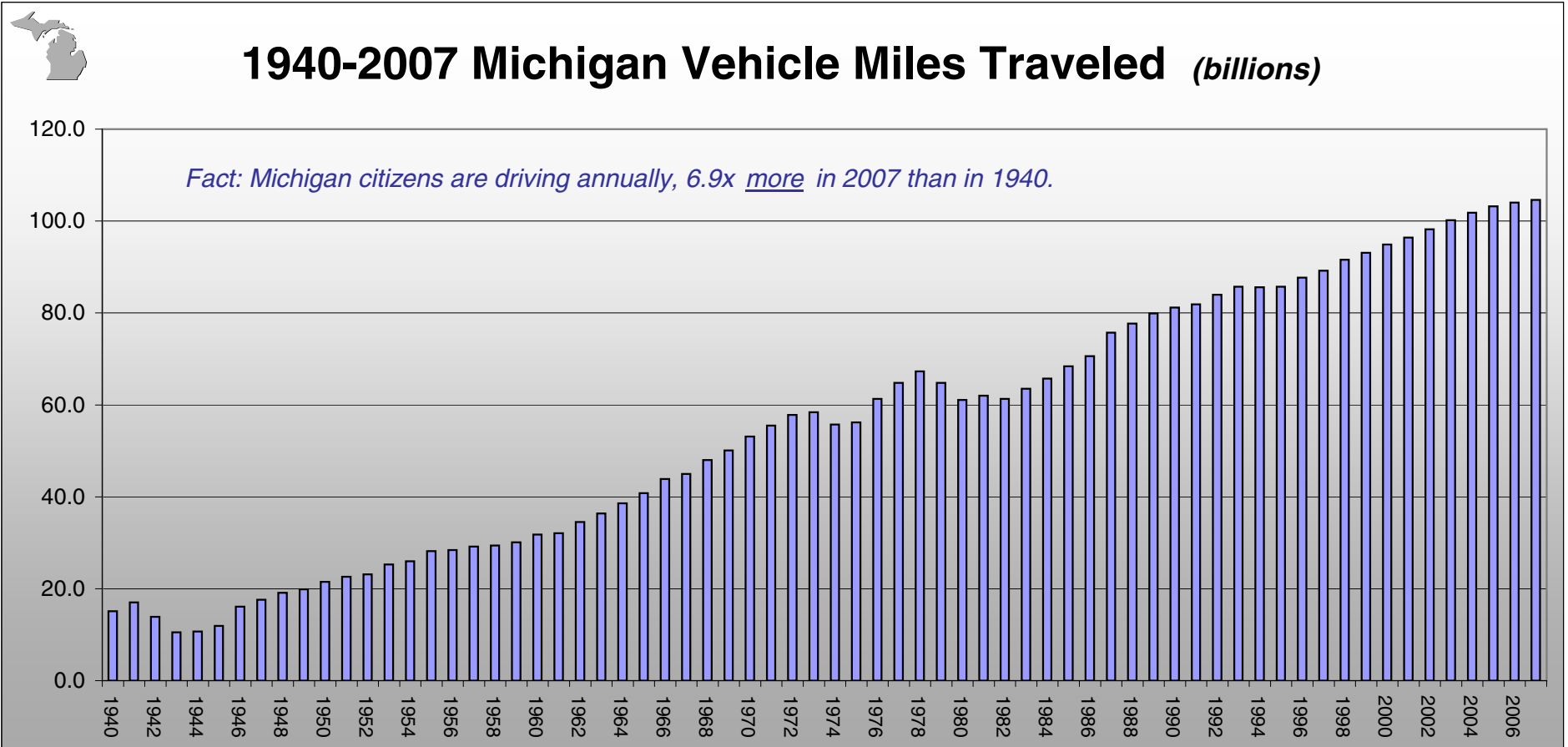
1940-2007 MICHIGAN TRANSPORTATION HISTORY



1940-2007 Michigan Registered Vehicles (millions)



1940-2007 MICHIGAN TRANSPORTATION HISTORY

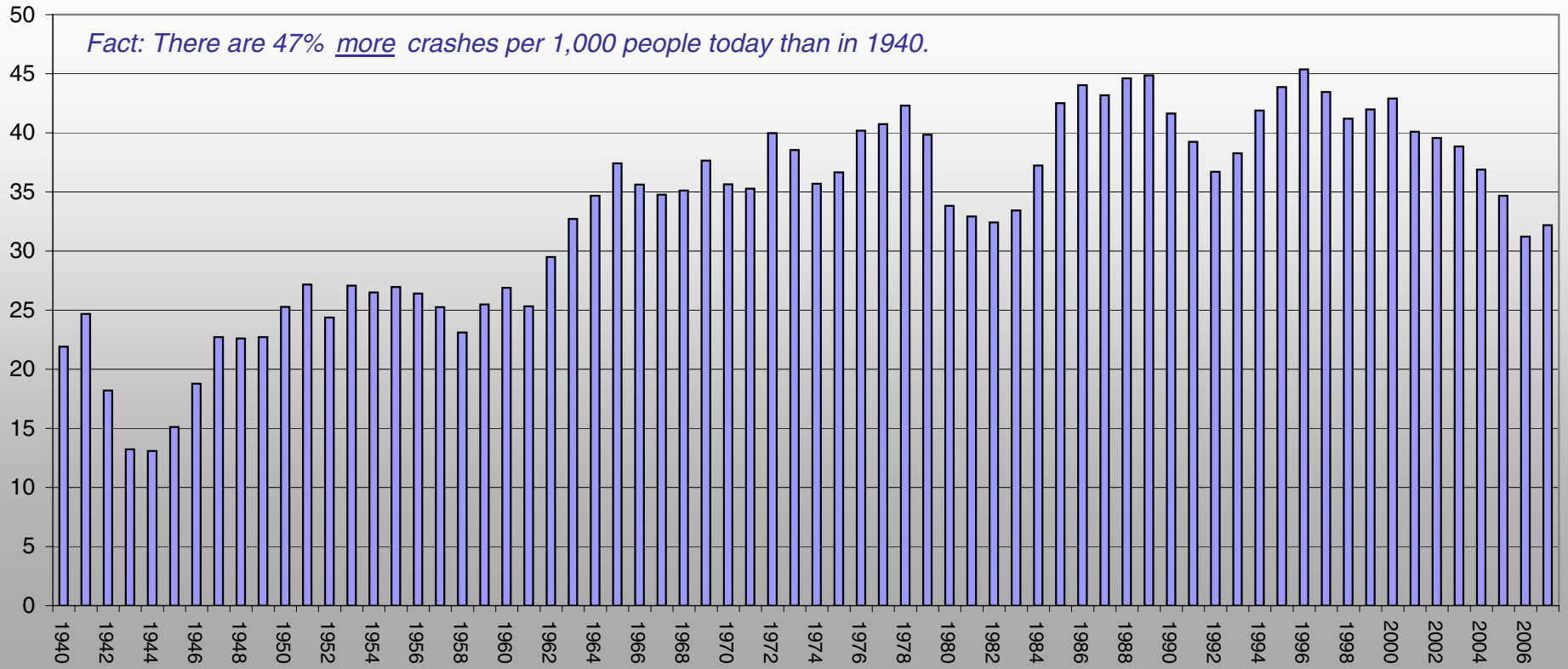


1940-2007 MICHIGAN TRANSPORTATION HISTORY



1940-2007 Michigan Crash Rate / Per 1,000 Population

Fact: There are 47% more crashes per 1,000 people today than in 1940.

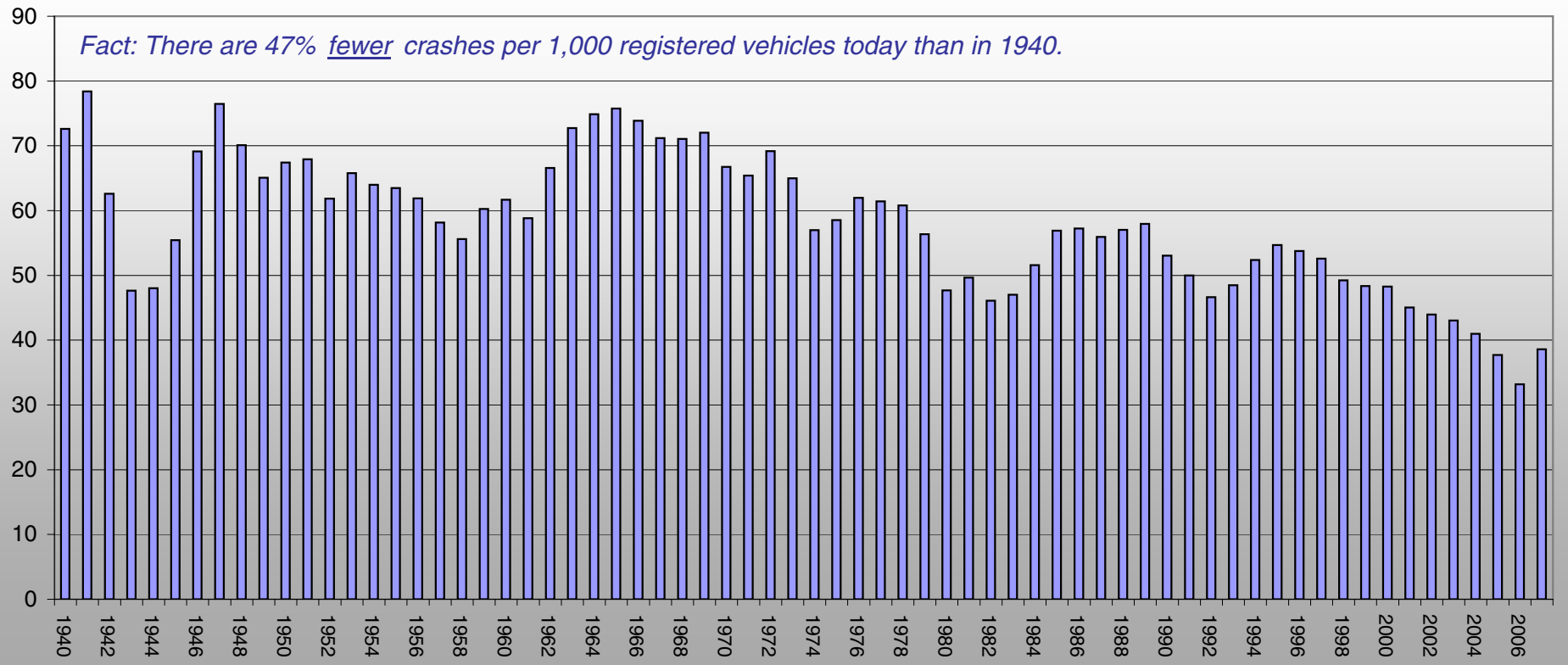


1940-2007 MICHIGAN TRANSPORTATION HISTORY



1940-2007 Michigan Crash Rate / Per 1,000 Registered Vehicles

Fact: There are 47% fewer crashes per 1,000 registered vehicles today than in 1940.

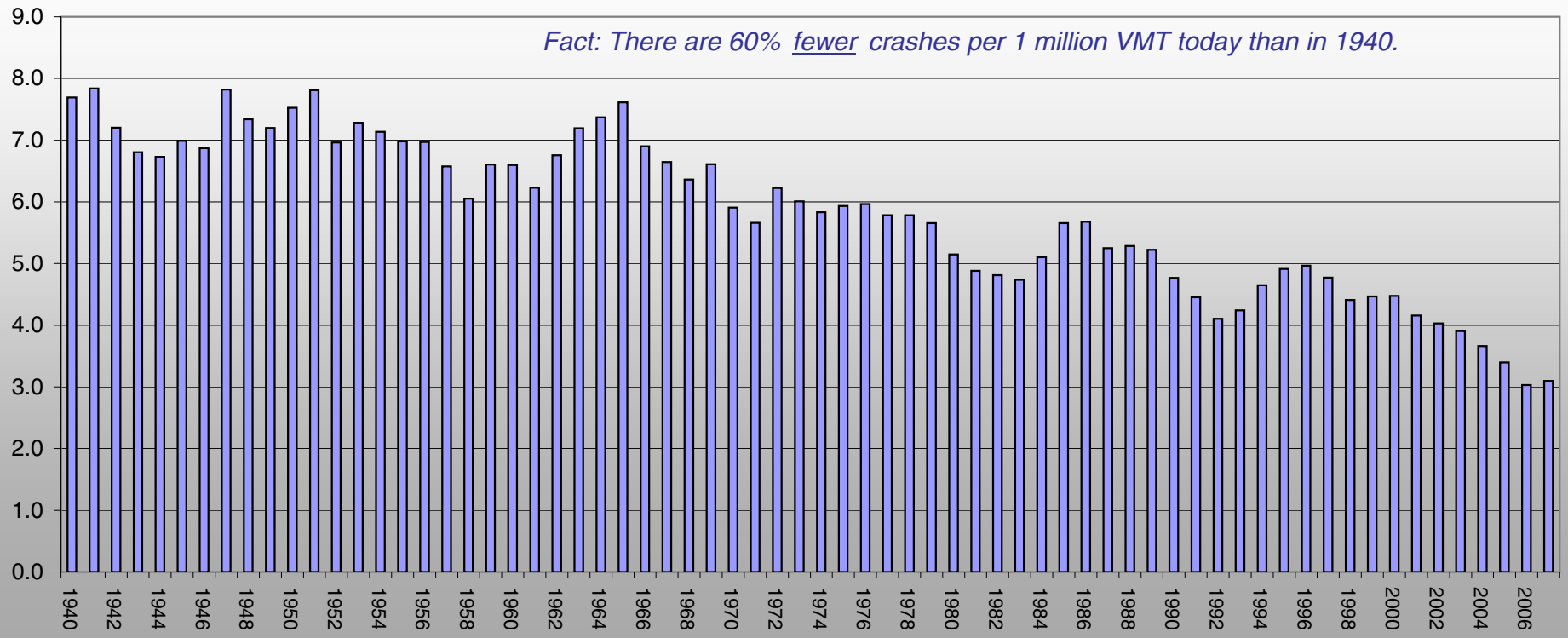


1940-2007 MICHIGAN TRANSPORTATION HISTORY



1940-2007 Michigan Crash Rate / 1 Million Vehicle Miles Traveled

Fact: There are 60% fewer crashes per 1 million VMT today than in 1940.

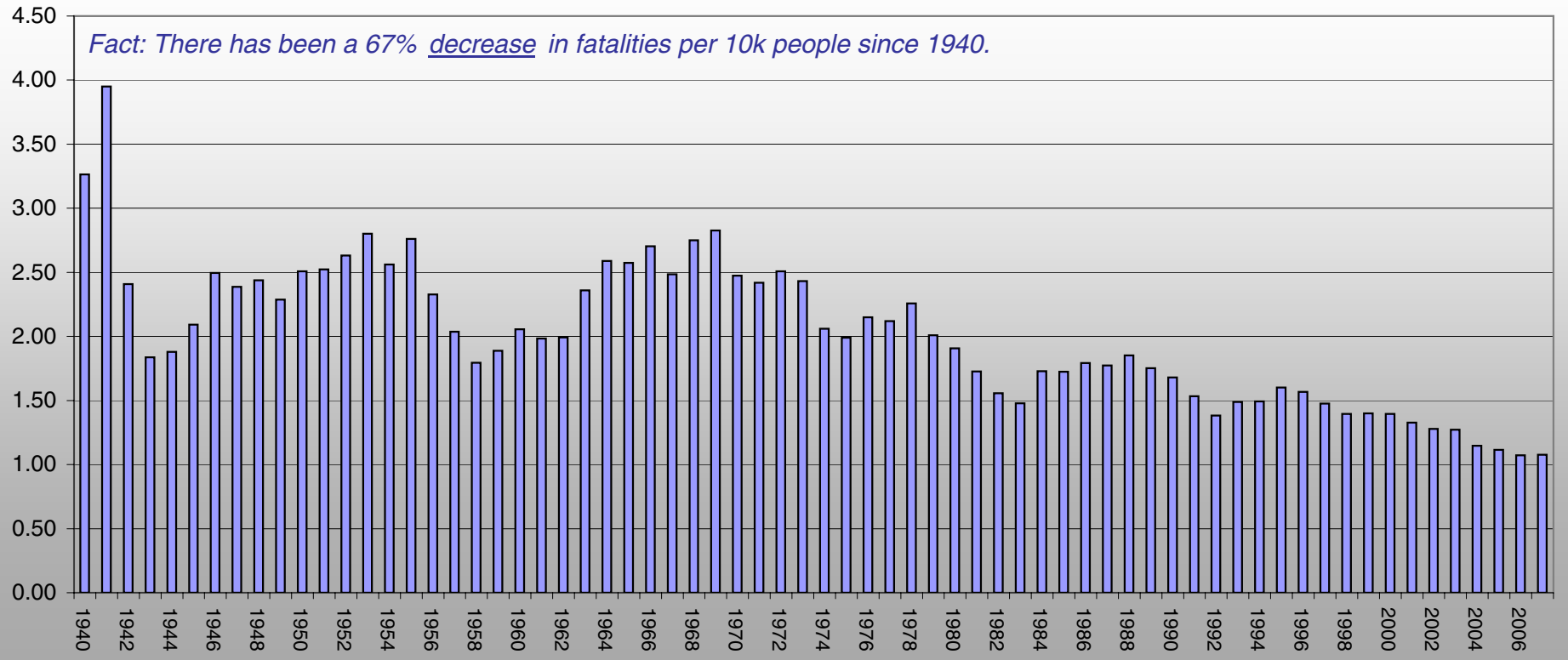


1940-2007 MICHIGAN TRANSPORTATION HISTORY



1940-2007 Michigan Fatality Rate / Per 10,000 Population

Fact: There has been a 67% decrease in fatalities per 10k people since 1940.

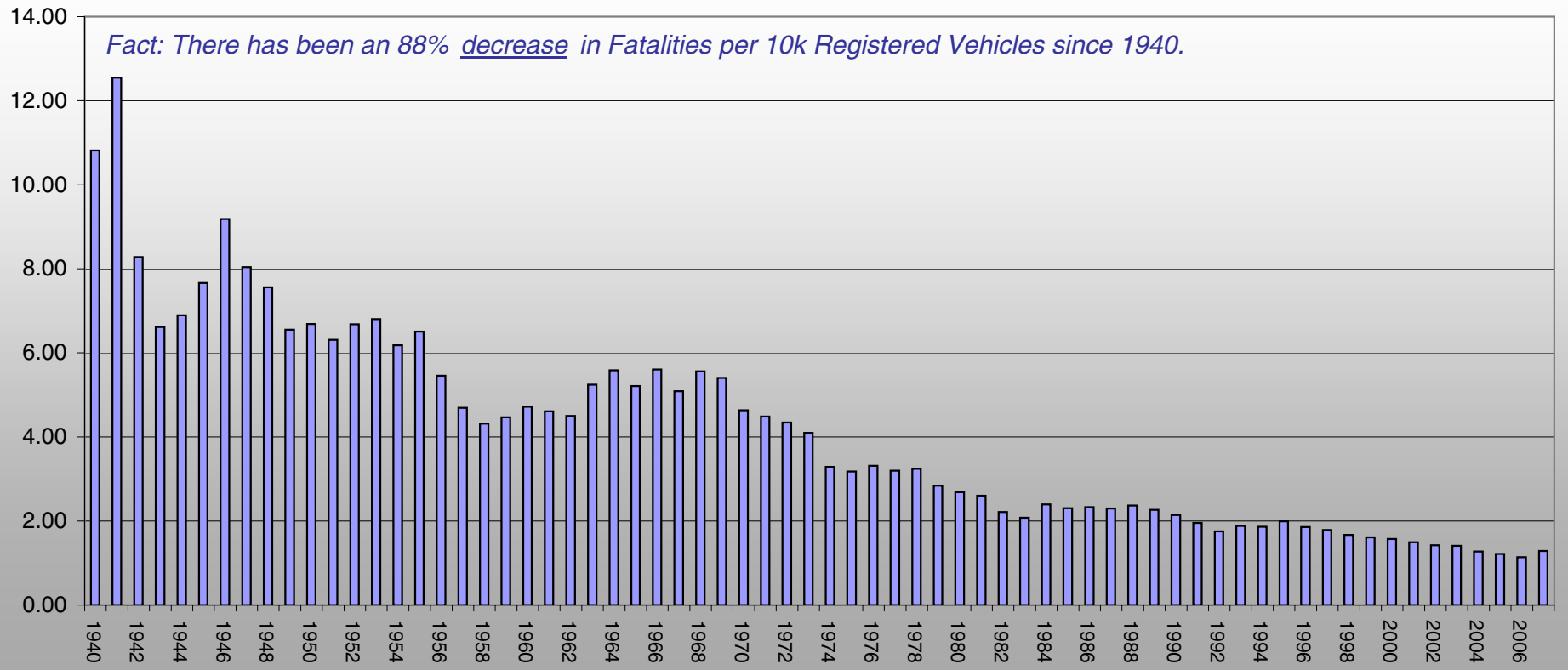


1940-2007 MICHIGAN TRANSPORTATION HISTORY



1940-2007 Michigan Fatality Rate / Per 10,000 Registered Vehicles

Fact: There has been an 88% decrease in Fatalities per 10k Registered Vehicles since 1940.

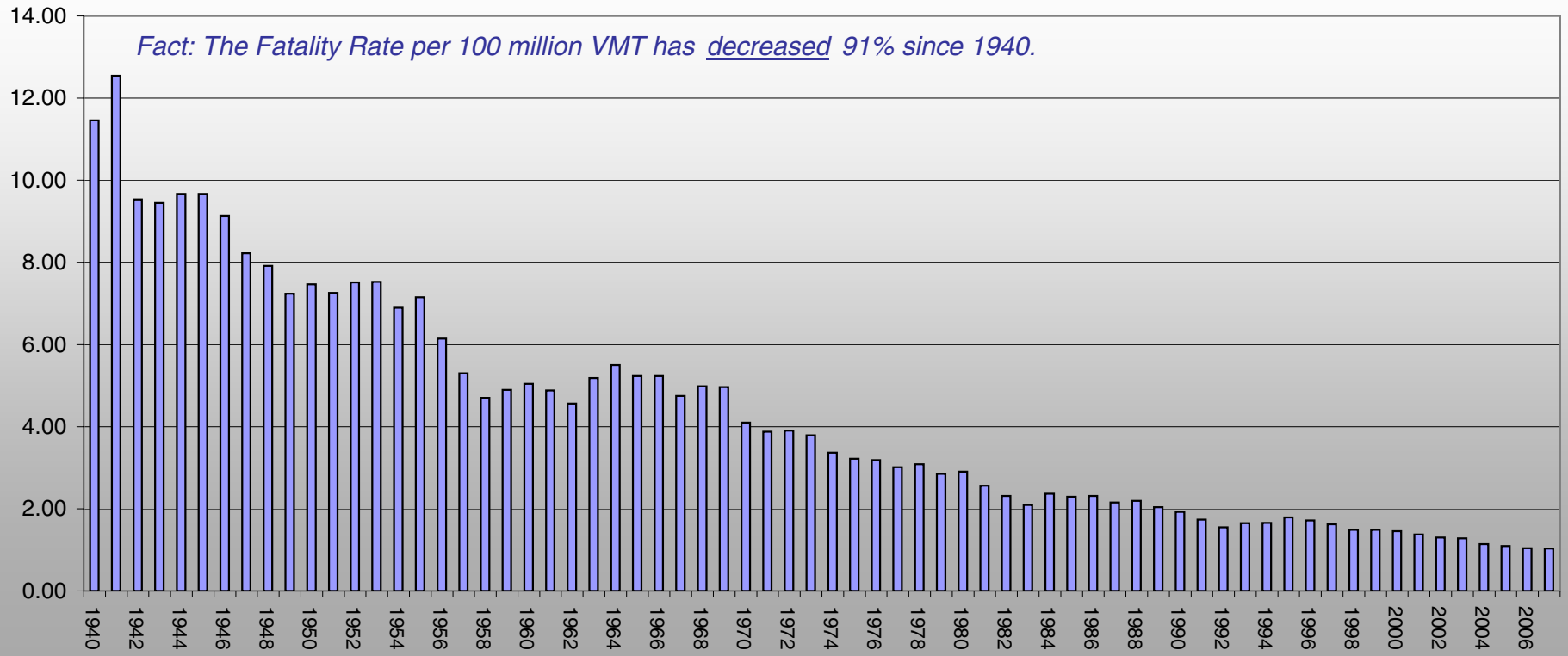


1940-2007 MICHIGAN TRANSPORTATION HISTORY



1940-2007 Michigan Fatality Rate / 100 Million Vehicle Miles Traveled

Fact: The Fatality Rate per 100 million VMT has decreased 91% since 1940.

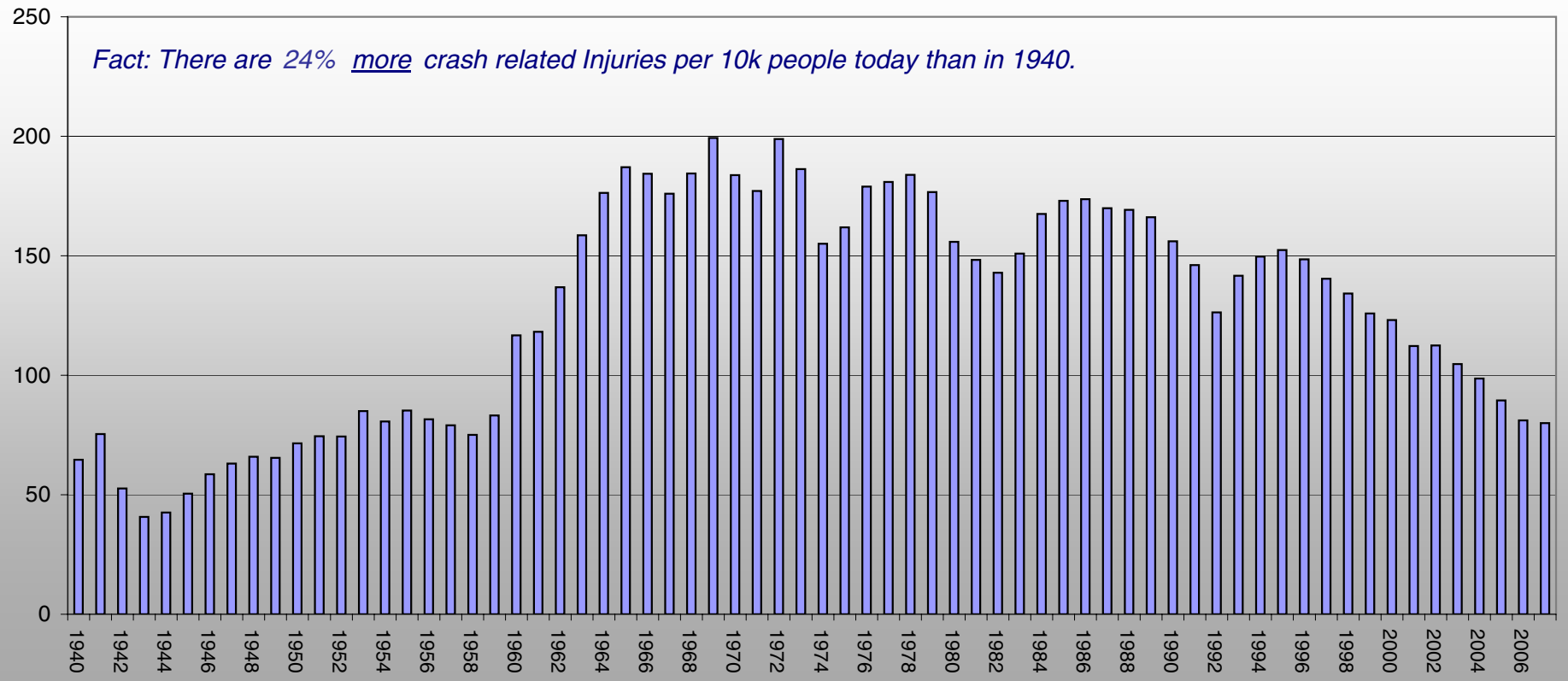


1940-2007 MICHIGAN TRANSPORTATION HISTORY



1940-2007 Michigan Injury Rate / Per 10,000 Population

Fact: There are 24% more crash related Injuries per 10k people today than in 1940.

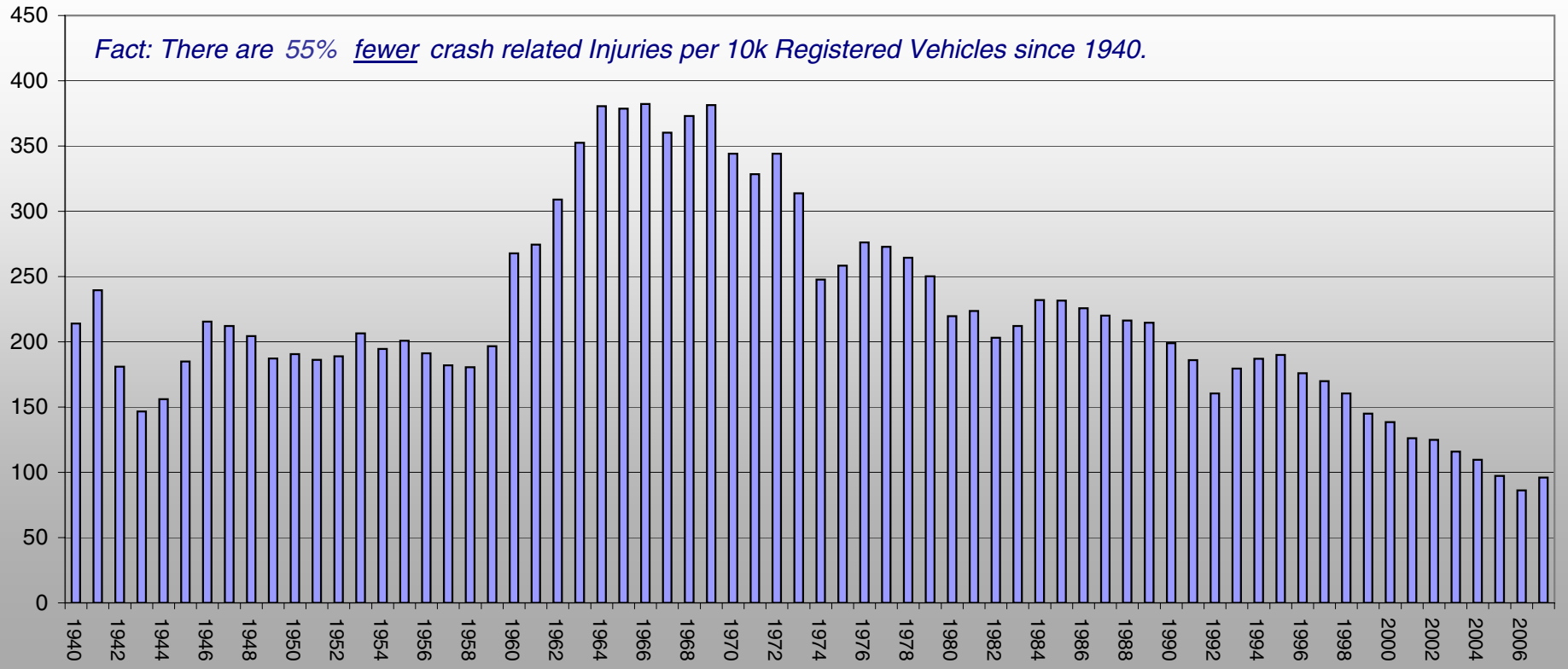


1940-2007 MICHIGAN TRANSPORTATION HISTORY



1940-2007 Michigan Injury Rate / Per 10,000 Registered Vehicles

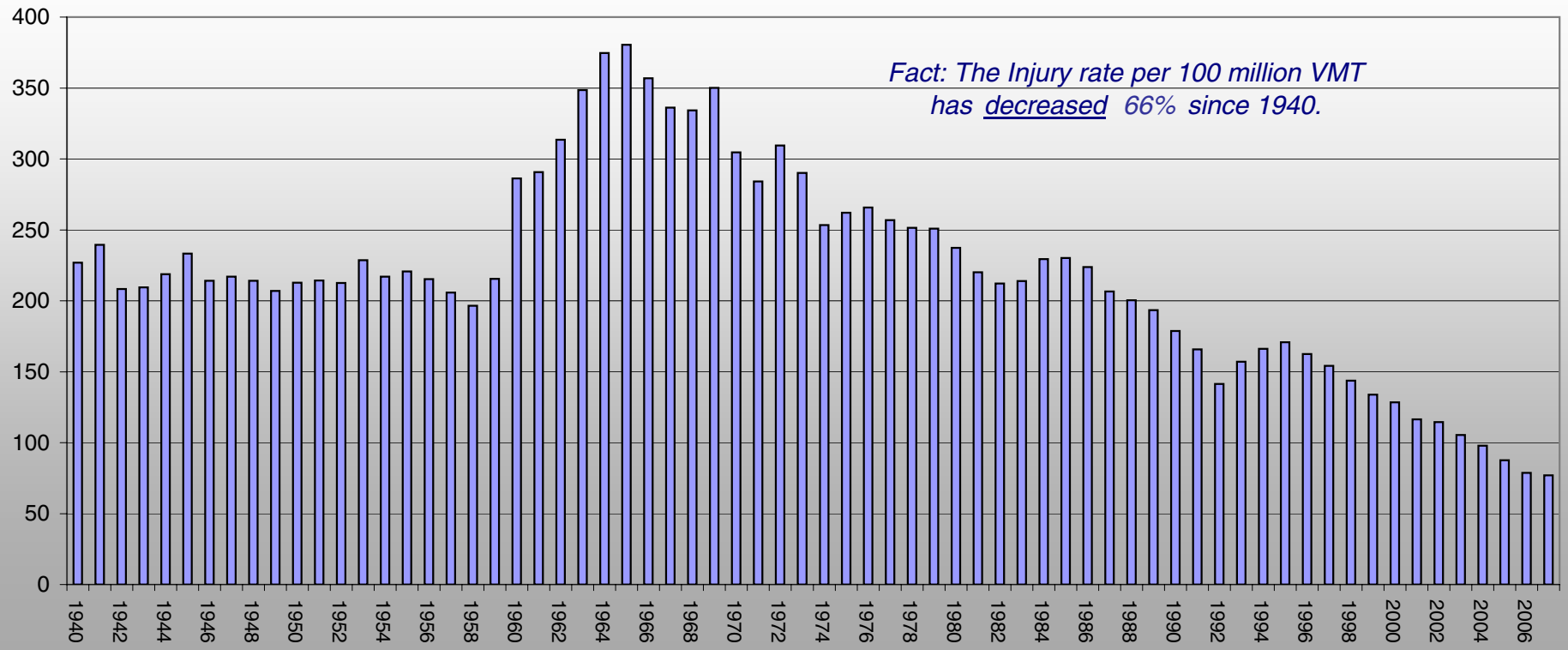
Fact: There are 55% fewer crash related Injuries per 10k Registered Vehicles since 1940.



1940-2007 MICHIGAN TRANSPORTATION HISTORY



1940-2007 Michigan Injury Rate / 100 Million Vehicle Miles Traveled

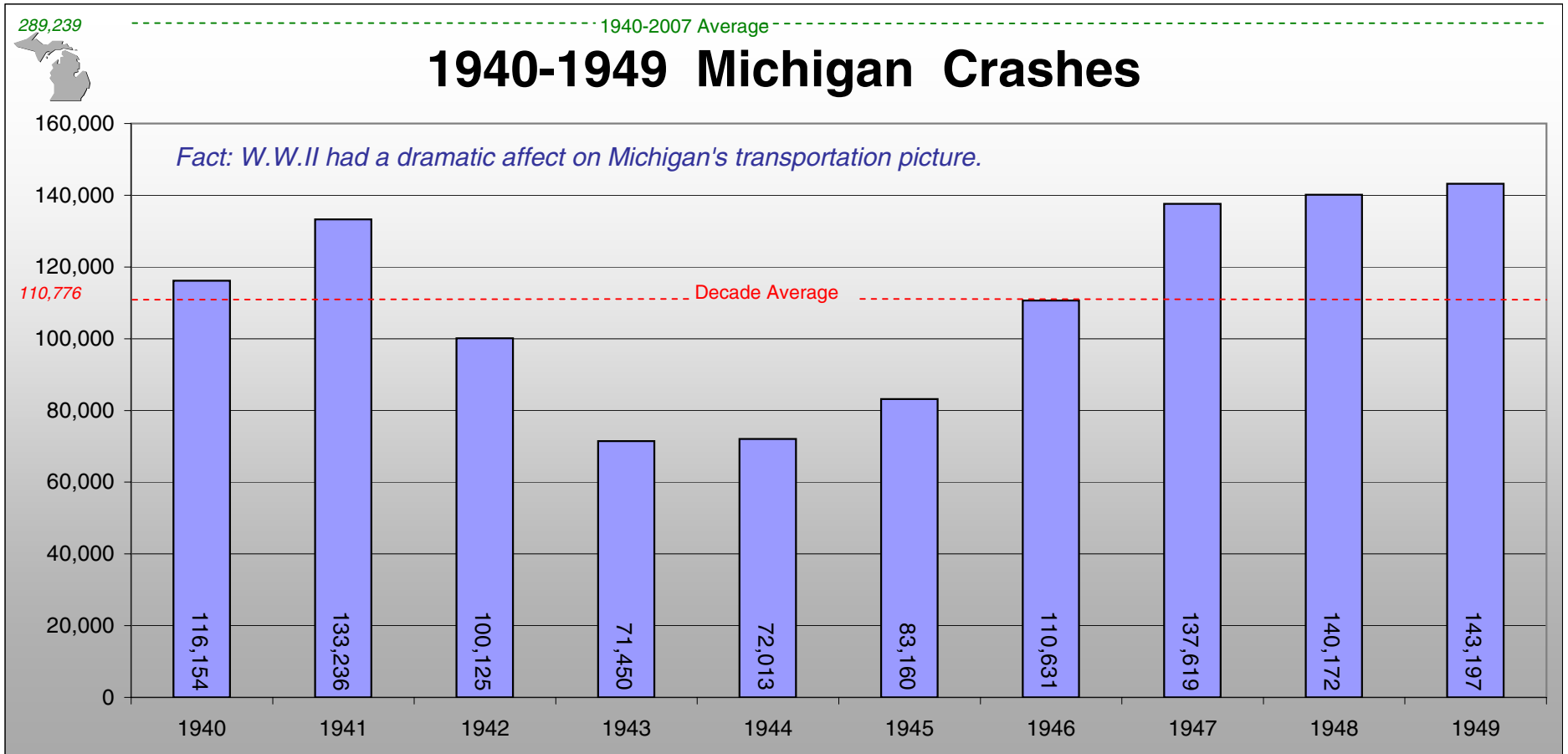


Ten Year Averages	Avg. Crashes	% Change	Avg. Fatalities	% Change	Avg. Injuries	% Change	Avg. Pop.	% Change	Avg. Reg. Vehicles	% Change	Avg. VMT	% Change
1940-1949	110,776	N/A	1,423	N/A	33,183	N/A	5.8	N/A	1.7	N/A	15.2	N/A
1950-1959	183,230	65.41%	1,684	18.34%	56,365	69.86%	7.1	23.29%	2.9	72.94%	26.4	73.78%
1960-1969	273,821	49.44%	2,020	19.95%	136,310	141.84%	8.3	16.15%	3.9	32.65%	40.1	52.08%
1970-1979	349,264	27.55%	2,032	0.55%	161,728	18.65%	9.1	9.67%	5.3	36.92%	59.5	48.28%
1980-1989	356,090	1.95%	1,583	-22.06%	148,006	-8.49%	9.2	0.88%	6.7	26.03%	68.6	15.30%
1990-1999	396,044	11.22%	1,436	-9.30%	135,907	-8.17%	9.6	4.59%	7.8	15.60%	86.6	26.21%
2000-2007	372,003	-6.07%	1,216	-15.33%	100,608	-25.97%	10.0	4.99%	9.0	15.92%	100.4	15.99%
Total Avg	289,239		1,640		110,586		8.4		5.2		55.4	

Year	Crashes	% Change	Fatalities	% Change	Injuries	% Change	Pop.	% Change	Reg. Vehicles	% Change	VMT	% Change
1940	116,154	N/A	1,730	N/A	34,247	N/A	5.3	N/A	1.6	N/A	15.1	N/A
1941	133,236	14.71%	2,133	23.29%	40,708	18.87%	5.4	1.89%	1.7	6.25%	17.0	12.58%
1942	100,125	-24.85%	1,325	-37.88%	28,967	-28.84%	5.5	1.85%	1.6	-5.88%	13.9	-18.24%
1943	71,450	-28.64%	992	-25.13%	21,988	-24.09%	5.6	1.82%	1.5	-6.25%	10.5	-24.46%
1944	72,013	0.79%	1,034	4.23%	23,401	6.43%	5.7	1.79%	1.5	0.00%	10.7	1.90%
1945	83,160	15.48%	1,150	11.22%	27,755	18.61%	5.8	1.75%	1.5	0.00%	11.9	11.21%
1946	110,631	33.03%	1,470	27.83%	34,479	24.23%	5.9	1.55%	1.6	6.67%	16.1	35.29%
1947	137,619	24.39%	1,447	-1.56%	38,195	10.78%	6.1	2.89%	1.8	12.50%	17.6	9.32%
1948	140,172	1.86%	1,512	4.49%	40,892	7.06%	6.2	2.31%	2.0	11.11%	19.1	8.52%
1949	143,197	2.16%	1,441	-4.70%	41,197	0.75%	6.3	1.61%	2.2	10.00%	19.9	4.19%
1950	161,750	12.96%	1,605	11.38%	45,734	11.01%	6.4	1.59%	2.4	9.09%	21.5	8.04%
1951	176,587	9.17%	1,640	2.18%	48,418	5.87%	6.5	1.56%	2.6	8.33%	22.6	5.12%
1952	160,829	-8.92%	1,736	5.85%	49,119	1.45%	6.6	1.54%	2.6	0.00%	23.1	2.21%
1953	184,174	14.52%	1,905	9.74%	57,834	17.74%	6.8	3.03%	2.8	7.69%	25.3	9.52%
1954	185,534	0.74%	1,793	-5.88%	56,444	-2.40%	7.0	2.94%	2.9	3.57%	26.0	2.77%
1955	196,812	6.08%	2,016	12.44%	62,234	10.26%	7.3	4.29%	3.1	6.90%	28.2	8.46%
1956	197,995	0.60%	1,746	-13.39%	61,158	-1.73%	7.5	2.74%	3.2	3.23%	28.4	0.71%
1957	191,915	-3.07%	1,548	-11.34%	60,067	-1.78%	7.6	1.33%	3.3	3.12%	29.2	2.82%
1958	177,934	-7.28%	1,382	-10.72%	57,767	-3.83%	7.7	1.32%	3.2	-3.03%	29.4	0.68%
1959	198,771	11.71%	1,473	6.58%	64,873	12.30%	7.8	1.30%	3.3	3.12%	30.1	2.38%
1960	209,724	5.51%	1,604	8.89%	91,026	40.31%	7.8	0.00%	3.4	3.03%	31.8	5.65%
1961	199,973	-4.65%	1,567	-2.31%	93,350	2.55%	7.9	1.28%	3.4	0.00%	32.1	0.94%
1962	233,078	16.55%	1,574	0.45%	108,143	15.85%	7.9	0.00%	3.5	2.94%	34.5	7.48%
1963	261,794	12.32%	1,887	19.89%	126,896	17.34%	8.0	1.27%	3.6	2.86%	36.4	5.51%
1964	284,444	8.65%	2,122	12.45%	144,623	13.97%	8.2	2.50%	3.8	5.56%	38.6	6.04%
1965	310,598	9.19%	2,136	0.66%	155,258	7.35%	8.3	1.22%	4.1	7.89%	40.8	5.70%
1966	302,880	-2.48%	2,298	7.58%	156,694	0.92%	8.5	2.41%	4.1	0.00%	43.9	7.60%
1967	299,004	-1.28%	2,137	-7.01%	151,297	-3.44%	8.6	1.18%	4.2	2.44%	45.0	2.51%
1968	305,495	2.17%	2,392	11.93%	160,413	6.03%	8.7	1.16%	4.3	2.38%	48.0	6.67%
1969	331,223	8.42%	2,487	3.97%	175,400	9.34%	8.8	1.15%	4.6	6.98%	50.1	4.38%
1970	313,715	-5.29%	2,177	-12.46%	161,719	-7.80%	8.8	0.00%	4.7	2.17%	53.1	5.99%
1971	314,015	0.10%	2,152	-1.15%	157,664	-2.51%	8.9	1.14%	4.8	2.13%	55.5	4.52%
1972	359,745	14.56%	2,258	4.93%	178,929	13.49%	9.0	1.12%	5.2	8.33%	57.8	4.14%

1973	350,864	-2.47%	2,213	-1.99%	169,485	-5.28%	9.1	1.11%	5.4	3.85%	58.4	1.04%
1974	324,763	-7.44%	1,875	-15.27%	141,132	-16.73%	9.1	0.00%	5.7	5.56%	55.7	-4.62%
1975	333,560	2.71%	1,811	-3.41%	147,299	4.37%	9.1	0.00%	5.7	0.00%	56.2	0.90%
1976	365,600	9.61%	1,955	7.95%	162,894	10.59%	9.1	0.00%	5.9	3.51%	61.3	9.07%
1977	374,751	2.50%	1,950	-0.26%	166,389	2.15%	9.2	1.10%	3.1	-47.46%	64.8	5.71%
1978	389,193	3.85%	2,076	6.46%	169,202	1.69%	9.2	0.00%	6.4	106.45%	67.3	3.86%
1979	366,435	-5.85%	1,849	-10.93%	162,571	-3.92%	9.2	0.00%	6.5	1.56%	64.8	-3.71%
1980	314,594	-14.15%	1,774	-4.06%	144,972	-10.83%	9.3	1.09%	6.6	1.54%	61.1	-5.71%
1981	302,831	-3.74%	1,589	-10.43%	136,455	-5.87%	9.2	-1.08%	6.1	-7.58%	62.0	1.47%
1982	294,971	-2.60%	1,417	-10.82%	130,061	-4.69%	9.1	-1.09%	6.4	4.92%	61.3	-1.13%
1983	300,797	1.98%	1,331	-6.07%	135,811	4.42%	9.0	-1.10%	6.4	0.00%	63.5	3.59%
1984	335,193	11.43%	1,556	16.90%	150,740	10.99%	9.0	0.00%	6.5	1.56%	65.7	3.46%
1985	386,904	15.43%	1,569	0.84%	157,417	4.43%	9.1	1.11%	6.8	4.62%	68.4	4.11%
1986	400,694	3.56%	1,632	4.02%	158,032	0.39%	9.1	0.00%	7.0	2.94%	70.6	3.22%
1987	397,224	-0.87%	1,632	0.00%	156,318	-1.08%	9.2	1.10%	7.1	1.43%	75.7	7.22%
1988	410,437	3.33%	1,704	4.41%	155,713	-0.39%	9.2	0.00%	7.2	1.41%	77.7	2.64%
1989	417,252	1.66%	1,630	-4.34%	154,537	-0.76%	9.3	1.09%	7.2	0.00%	79.9	2.83%
1990	387,180	-7.21%	1,563	-4.11%	145,179	-6.06%	9.3	0.00%	7.3	1.39%	81.2	1.63%
1991	364,847	-5.77%	1,425	-8.83%	135,830	-6.44%	9.3	0.00%	7.3	0.00%	81.9	0.86%
1992	344,942	-5.46%	1,300	-8.77%	118,727	-12.59%	9.4	1.08%	7.4	1.37%	84.0	2.56%
1993	363,636	5.42%	1,414	8.77%	134,548	13.33%	9.5	1.06%	7.5	1.35%	85.7	2.02%
1994	398,050	9.46%	1,419	0.35%	142,200	5.69%	9.5	0.00%	7.6	1.33%	85.6	-0.12%
1995	421,073	5.78%	1,537	8.32%	146,303	2.89%	9.6	1.05%	7.7	1.32%	85.7	0.12%
1996	435,477	3.42%	1,505	-2.08%	142,553	-2.56%	9.6	0.00%	8.1	5.19%	87.7	2.33%
1997	425,793	-2.22%	1,446	-3.92%	137,548	-3.51%	9.8	2.08%	8.1	0.00%	89.2	1.71%
1998	403,766	-5.17%	1,367	-5.46%	131,578	-4.34%	9.8	0.00%	8.2	1.23%	91.6	2.69%
1999	415,675	2.95%	1,386	1.39%	124,601	-5.30%	9.9	1.02%	8.6	4.88%	93.1	1.64%
2000	424,852	2.21%	1,382	-0.29%	121,826	-2.23%	9.9	0.00%	8.8	2.33%	94.9	1.93%
2001	400,813	-5.66%	1,328	-3.91%	112,294	-7.82%	10.0	1.01%	8.9	1.14%	96.4	1.58%
2002	395,515	-1.32%	1,279	-3.69%	112,484	0.17%	10.0	0.00%	9.0	1.12%	98.2	1.87%
2003	391,485	-1.02%	1,283	0.31%	105,555	-6.16%	10.08	0.80%	9.1	1.11%	100.2	2.04%
2004	373,028	-4.71%	1,159	-9.66%	99,680	-5.57%	10.11	0.32%	9.2	0.55%	101.8	1.60%
2005	350,838	-5.95%	1,129	-2.59%	90,510	-9.20%	10.12	0.08%	9.3	1.64%	103.2	1.38%
2006	315,322	-10.12%	1,084	-3.99%	81,942	-9.47%	10.10	-0.20%	9.5	2.15%	104.0	0.78%
2007	324,174	2.81%	1,084	0.00%	80,576	-1.67%	10.07	-0.30%	8.4	-11.58%	104.6	0.58%
TOTALS	19,668,275		111,522		7,519,851		570		356		3,767	
AVE	289,239		1,640		110,586							

1940-2007 MICHIGAN TRANSPORTATION HISTORY



1940-2007 MICHIGAN TRANSPORTATION HISTORY



289,239

250,000

1950-1959 Michigan Crashes

1940-2007 Average

Fact: Crashes increased 23% from 1950 to 1959.

200,000

183,230

Decade Average

150,000

100,000

50,000

0

1950

1951

1952

1953

1954

1955

1956

1957

1958

1959

161,750

176,587

160,829

184,174

185,534

196,812

197,995

191,915

177,934

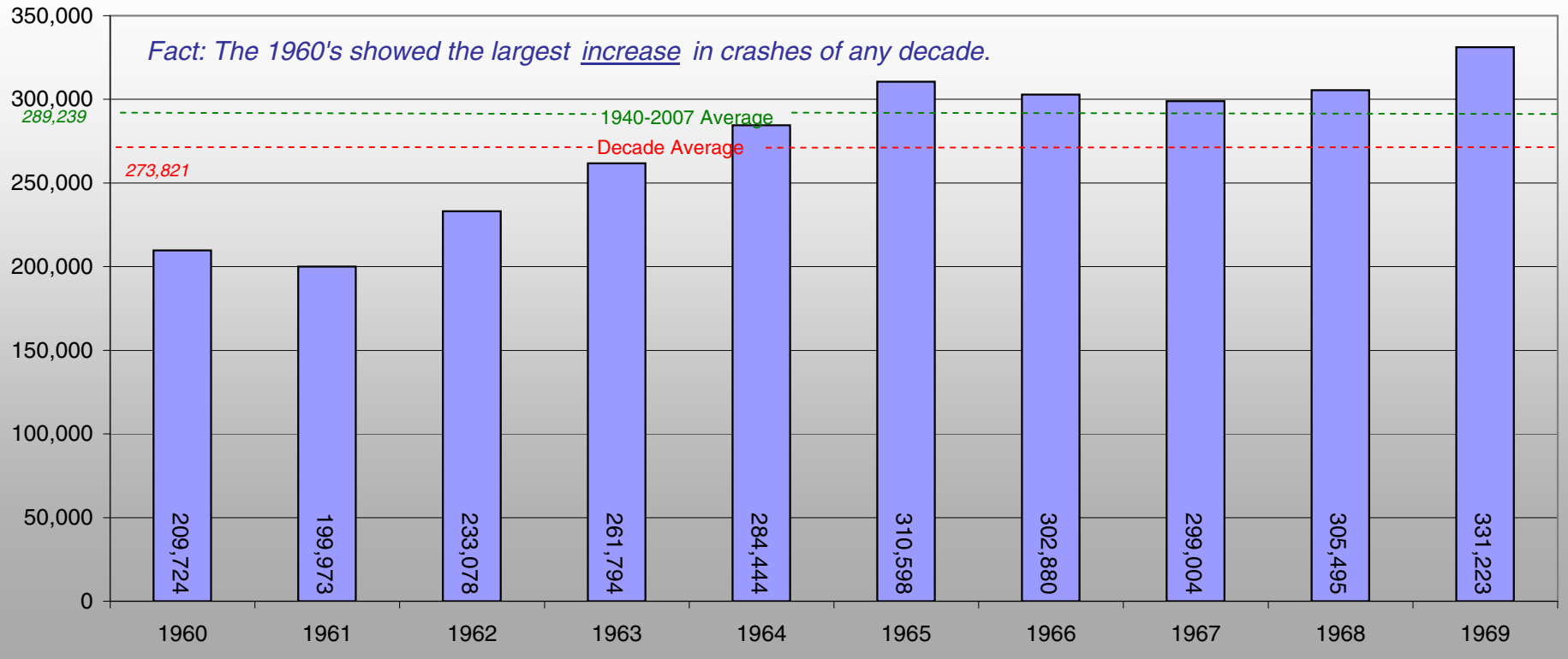
198,771

1940-2007 MICHIGAN TRANSPORTATION HISTORY

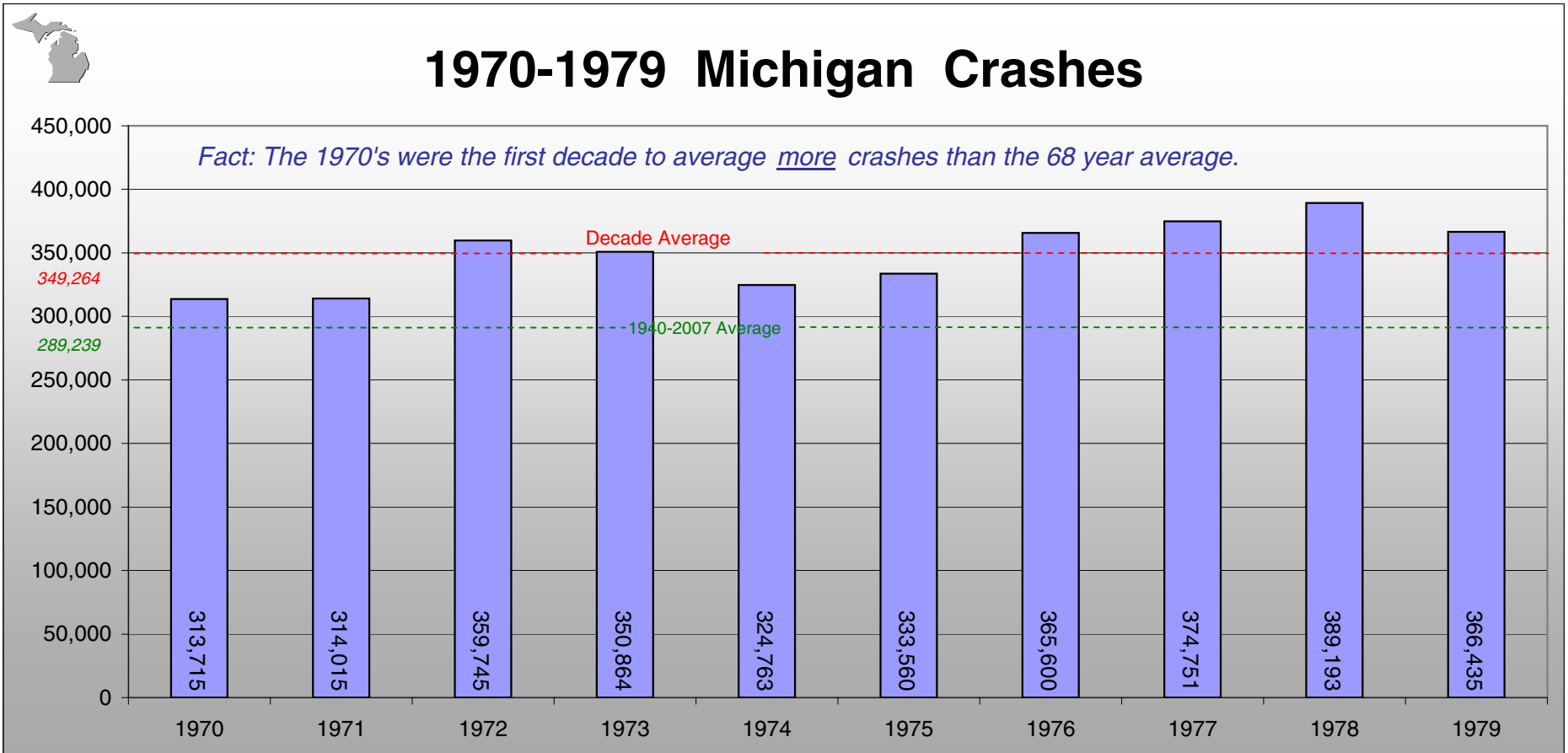


1960-1969 Michigan Crashes

Fact: The 1960's showed the largest increase in crashes of any decade.



1940-2007 MICHIGAN TRANSPORTATION HISTORY

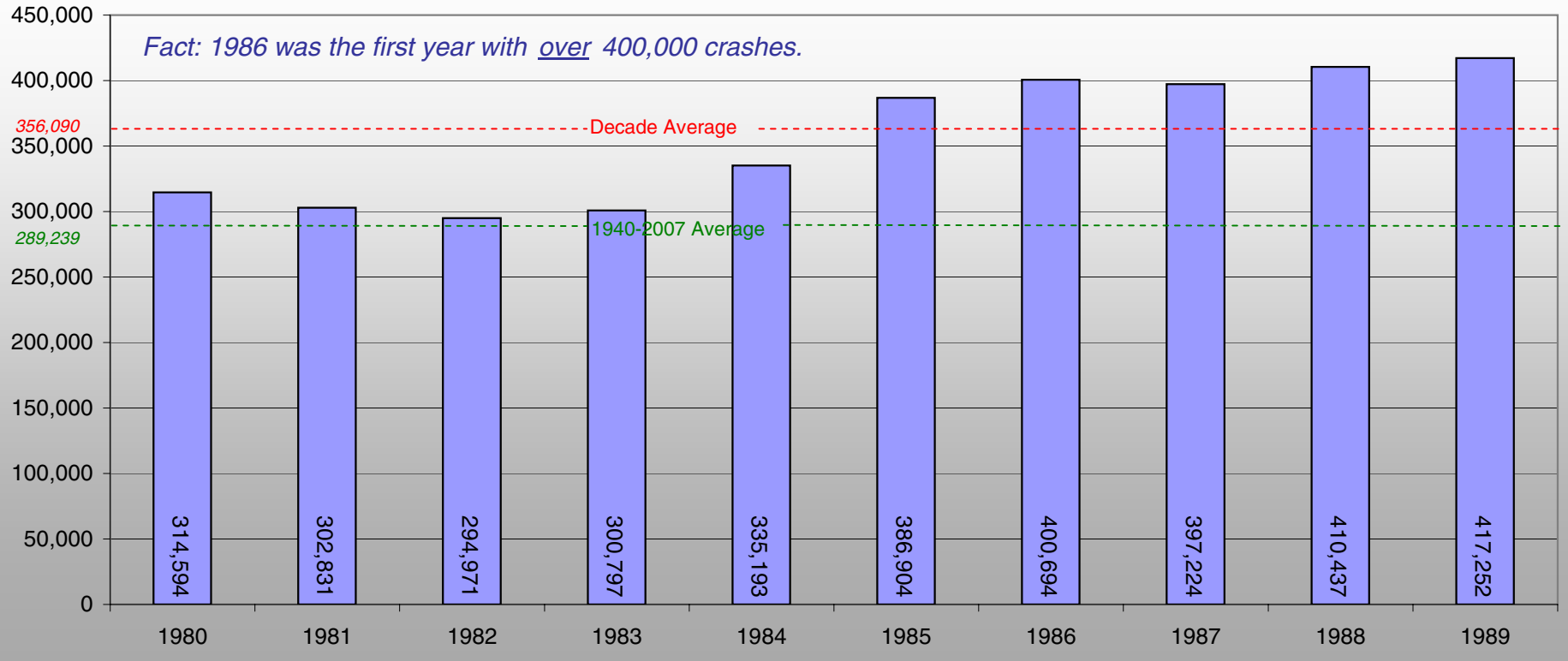


1940-2007 MICHIGAN TRANSPORTATION HISTORY



1980-1989 Michigan Crashes

Fact: 1986 was the first year with over 400,000 crashes.

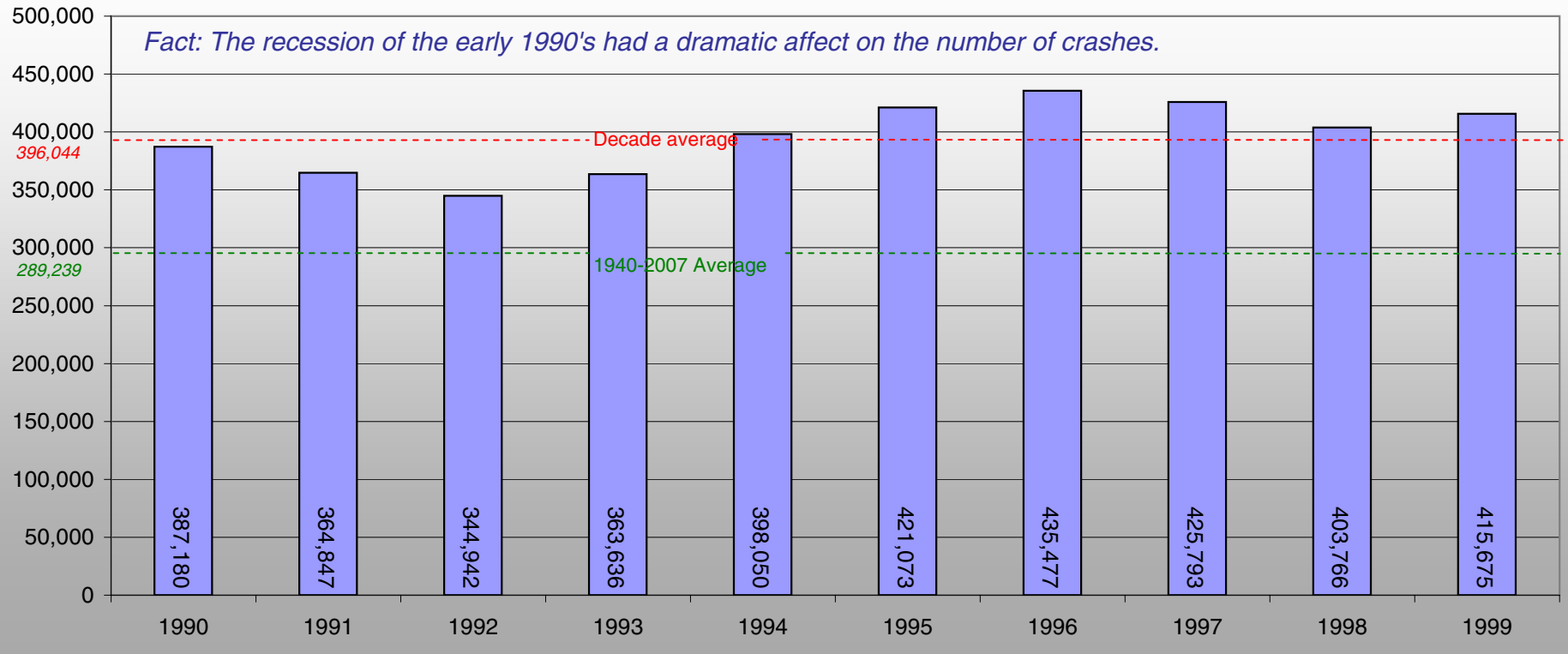


1940-2007 MICHIGAN TRANSPORTATION HISTORY



1990-1999 Michigan Crashes

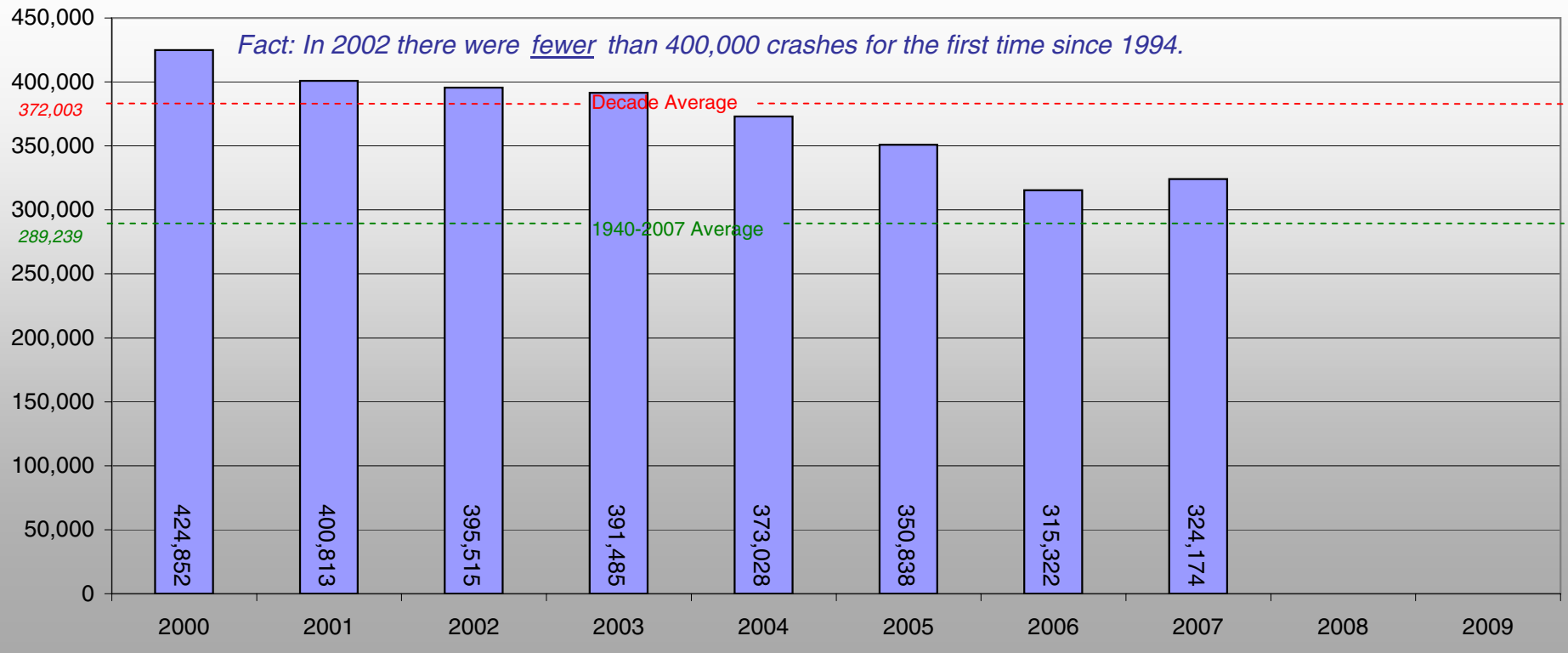
Fact: The recession of the early 1990's had a dramatic affect on the number of crashes.



1940-2007 MICHIGAN TRANSPORTATION HISTORY



2000-2007 Michigan Crashes

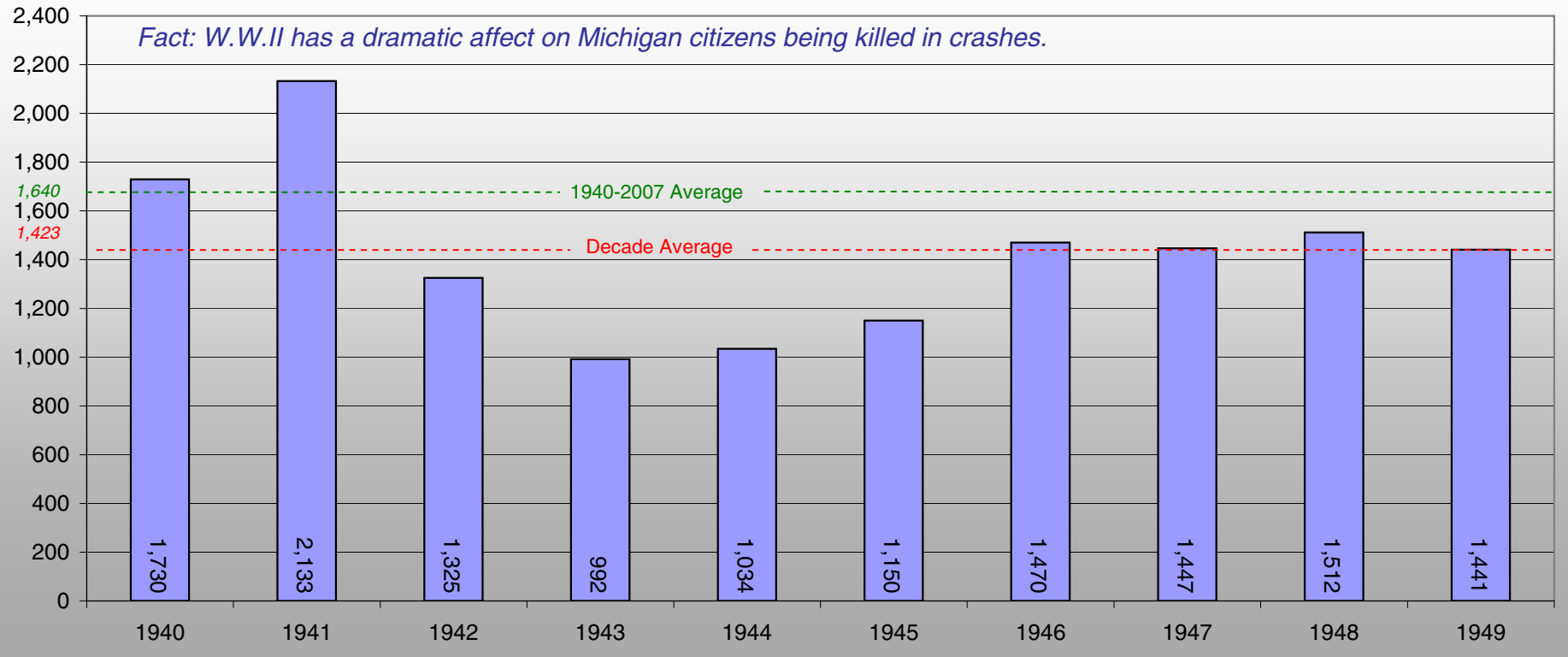


1940-2007 MICHIGAN TRANSPORTATION HISTORY



1940-1949 Michigan Fatalities

Fact: W.W.II has a dramatic affect on Michigan citizens being killed in crashes.

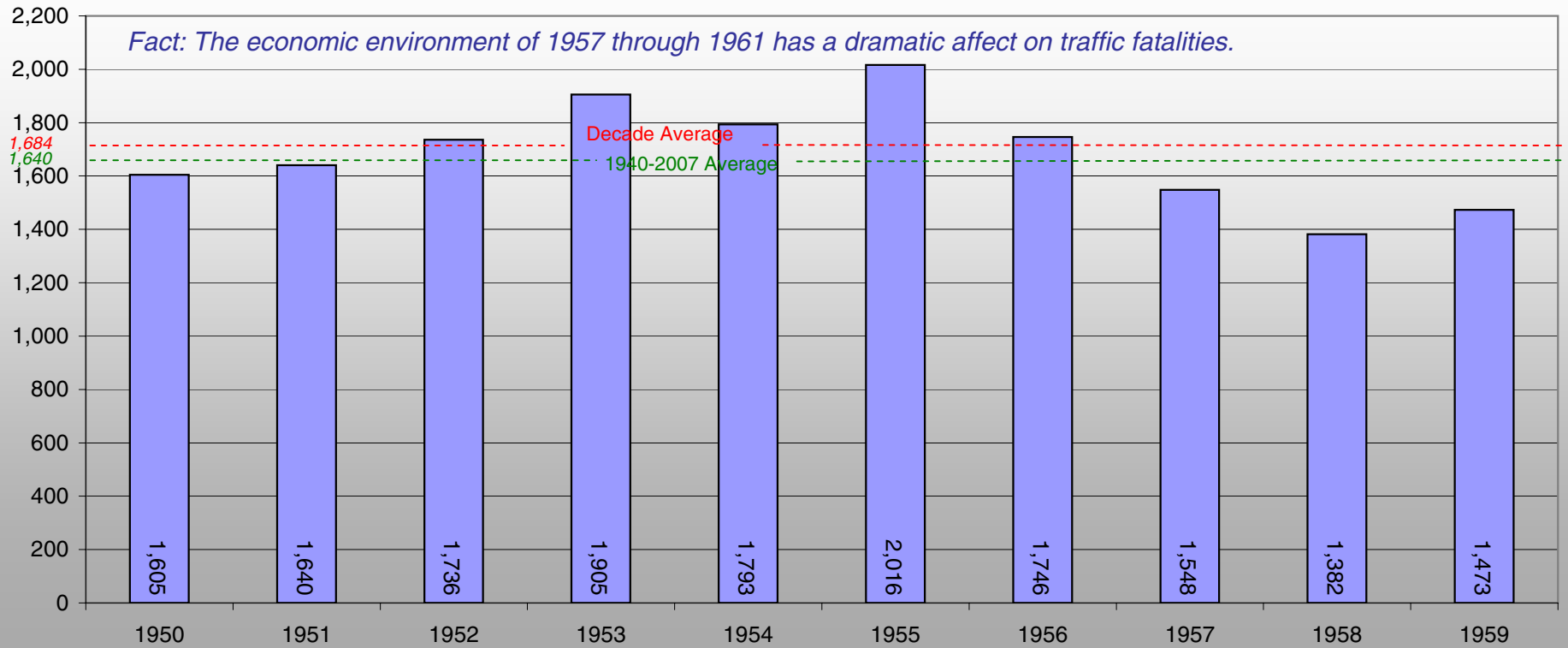


1940-2007 MICHIGAN TRANSPORTATION HISTORY



1950-1959 Michigan Fatalities

Fact: The economic environment of 1957 through 1961 has a dramatic affect on traffic fatalities.

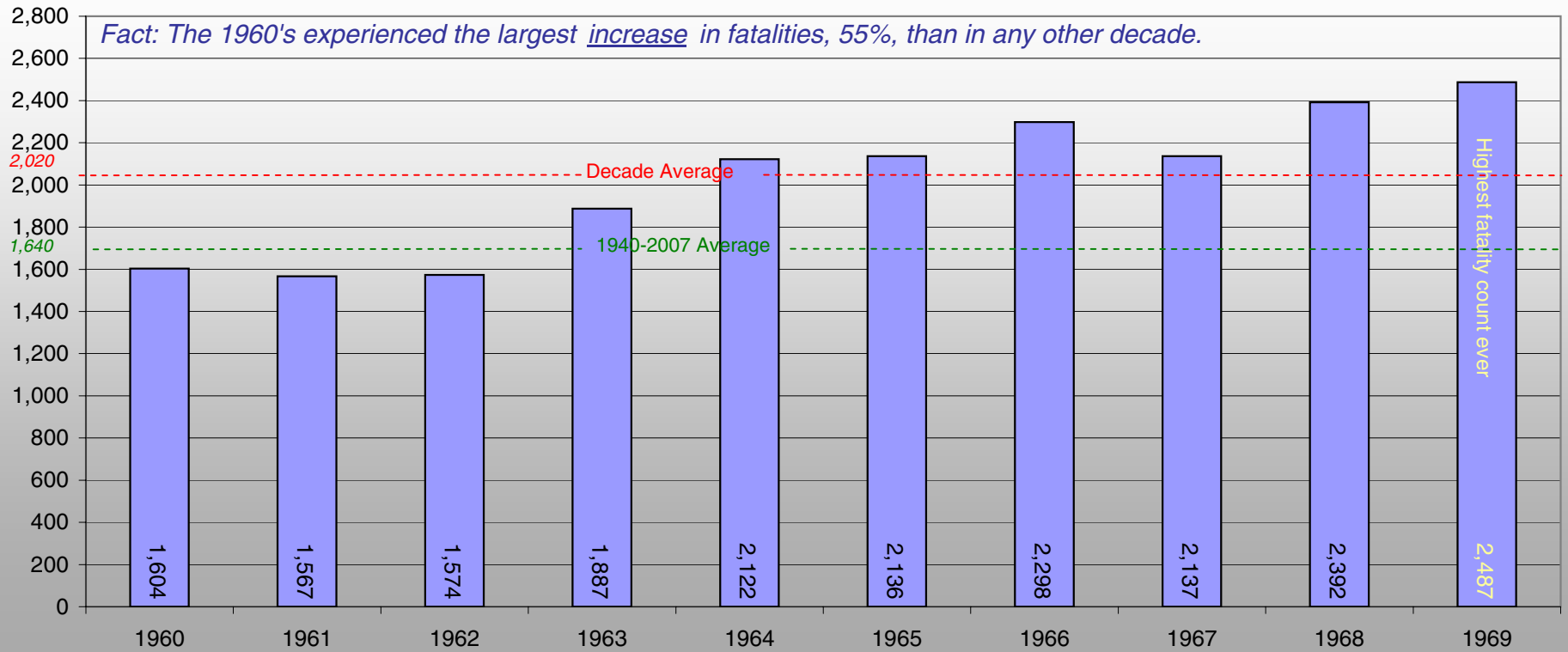


1940-2007 MICHIGAN TRANSPORTATION HISTORY



1960-1969 Michigan Fatalities

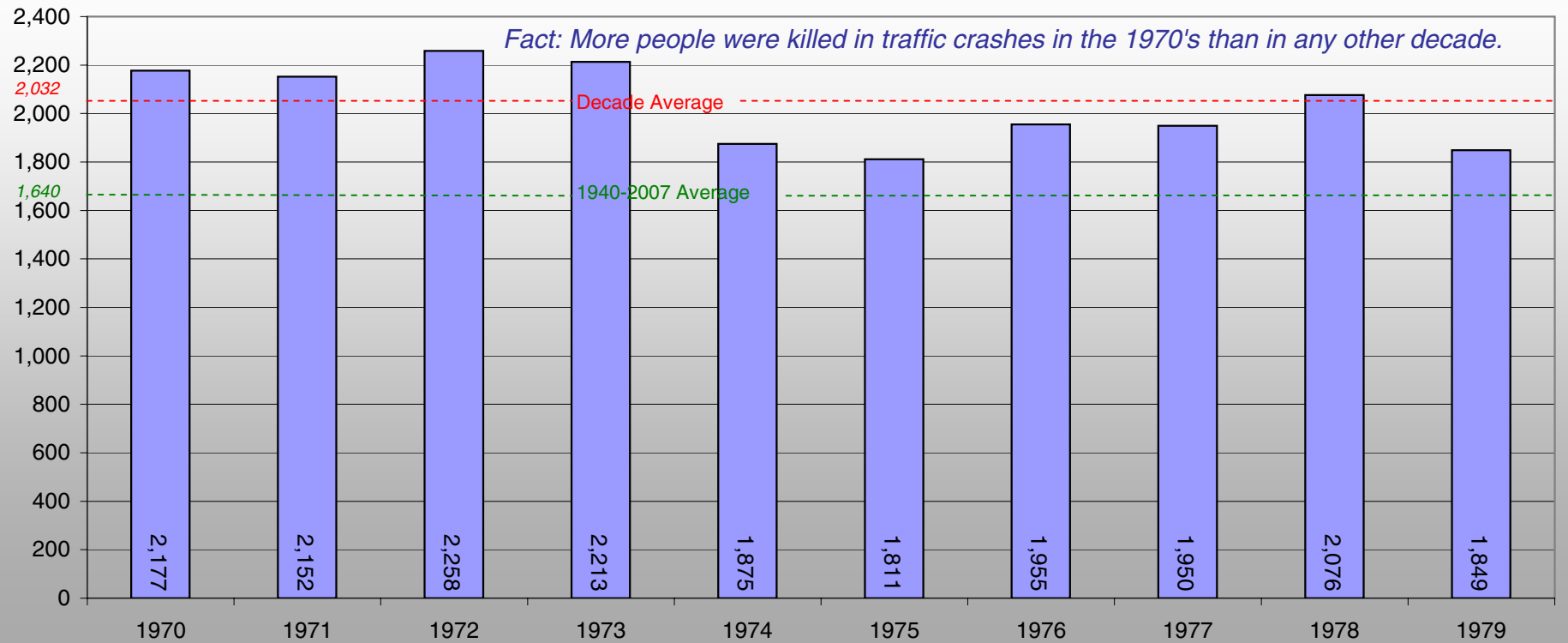
Fact: The 1960's experienced the largest increase in fatalities, 55%, than in any other decade.



1940-2007 MICHIGAN TRANSPORTATION HISTORY



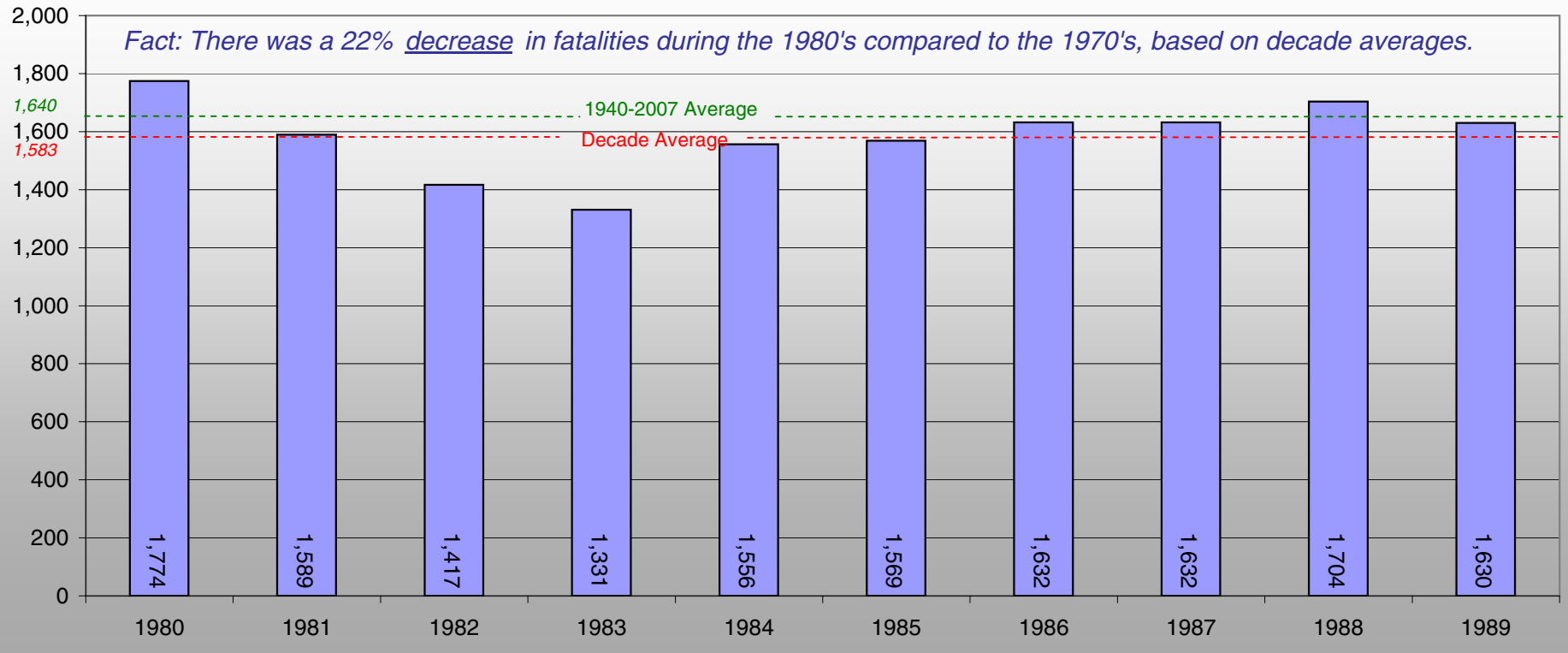
1970-1979 Michigan Fatalities



1940-2007 MICHIGAN TRANSPORTATION HISTORY



1980-1989 Michigan Fatalities

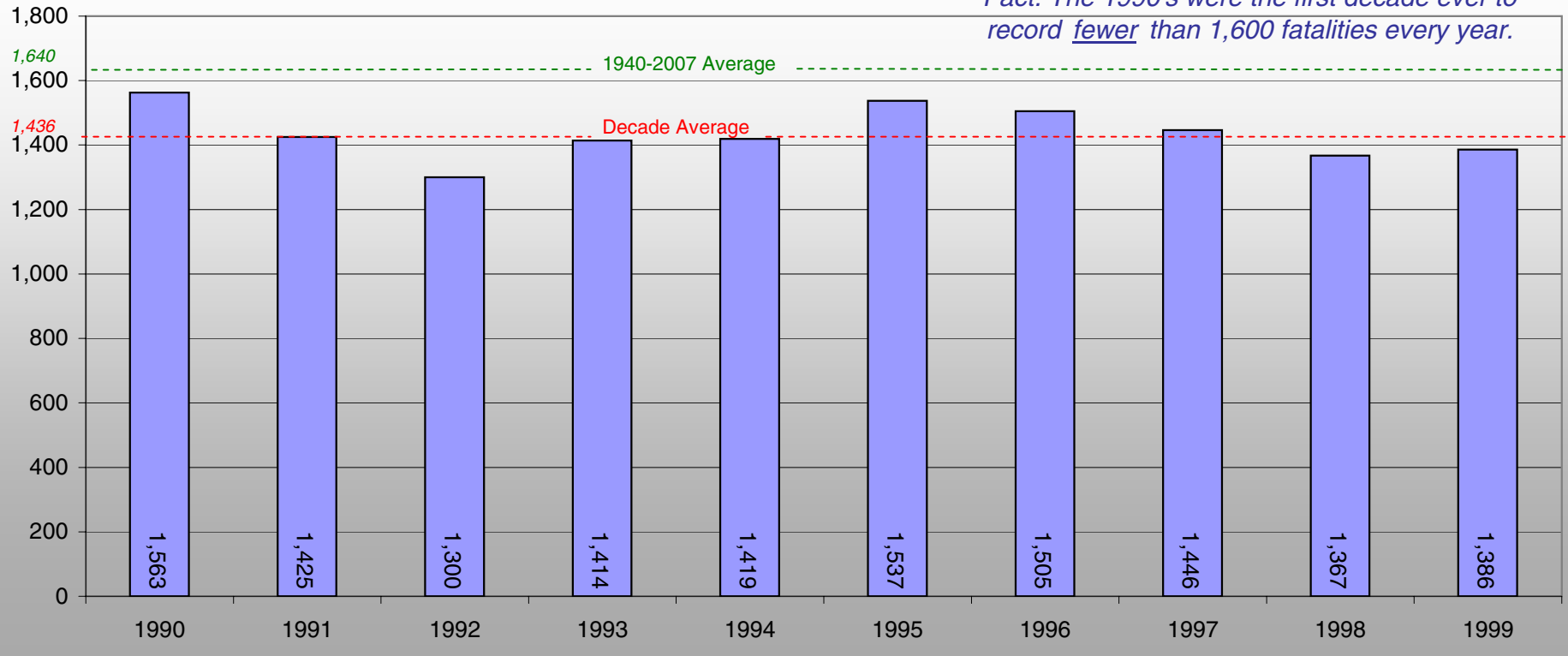


1940-2007 MICHIGAN TRANSPORTATION HISTORY



1990-1999 Michigan Fatalities

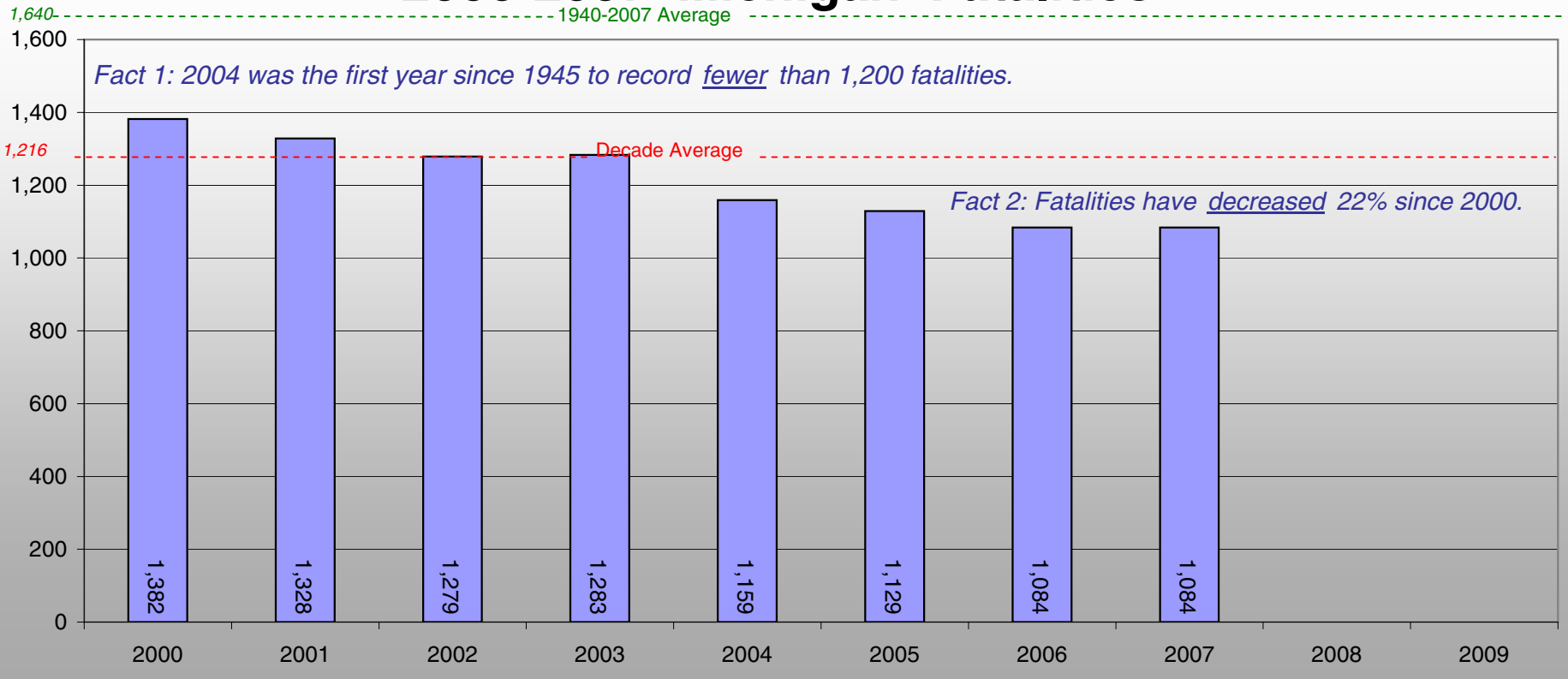
Fact: The 1990's were the first decade ever to record fewer than 1,600 fatalities every year.



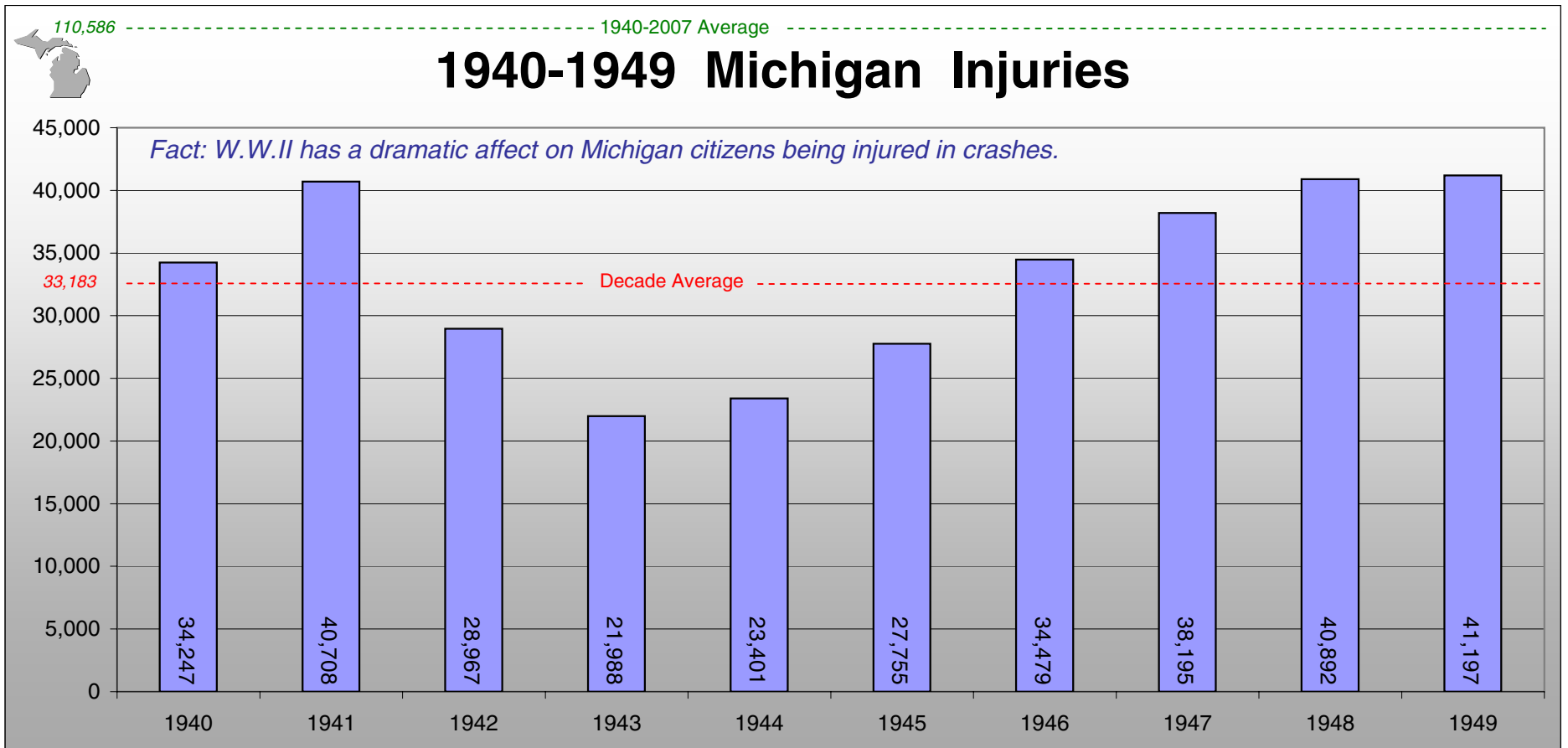
1940-2007 MICHIGAN TRANSPORTATION HISTORY



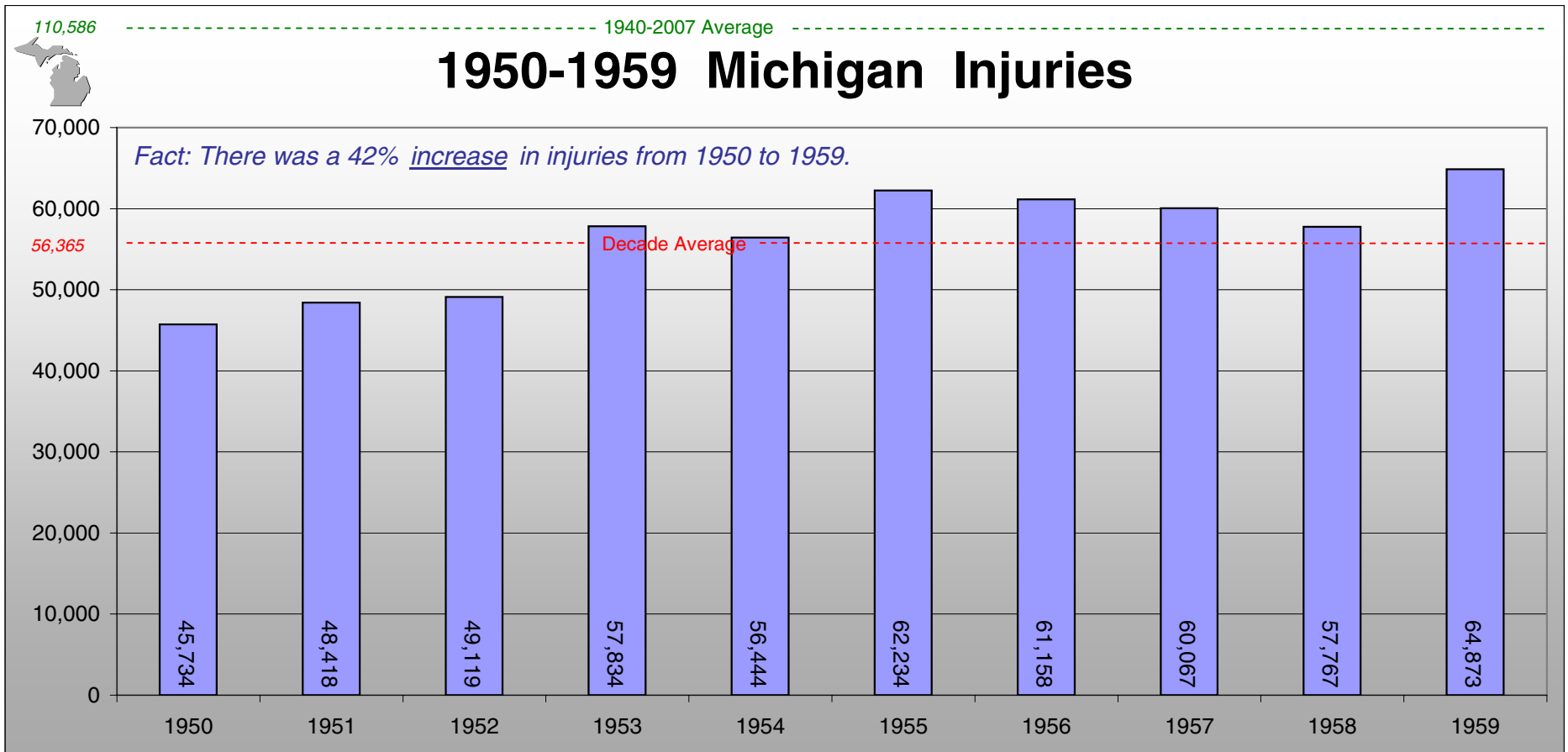
2000-2007 Michigan Fatalities



1940-2007 MICHIGAN TRANSPORTATION HISTORY



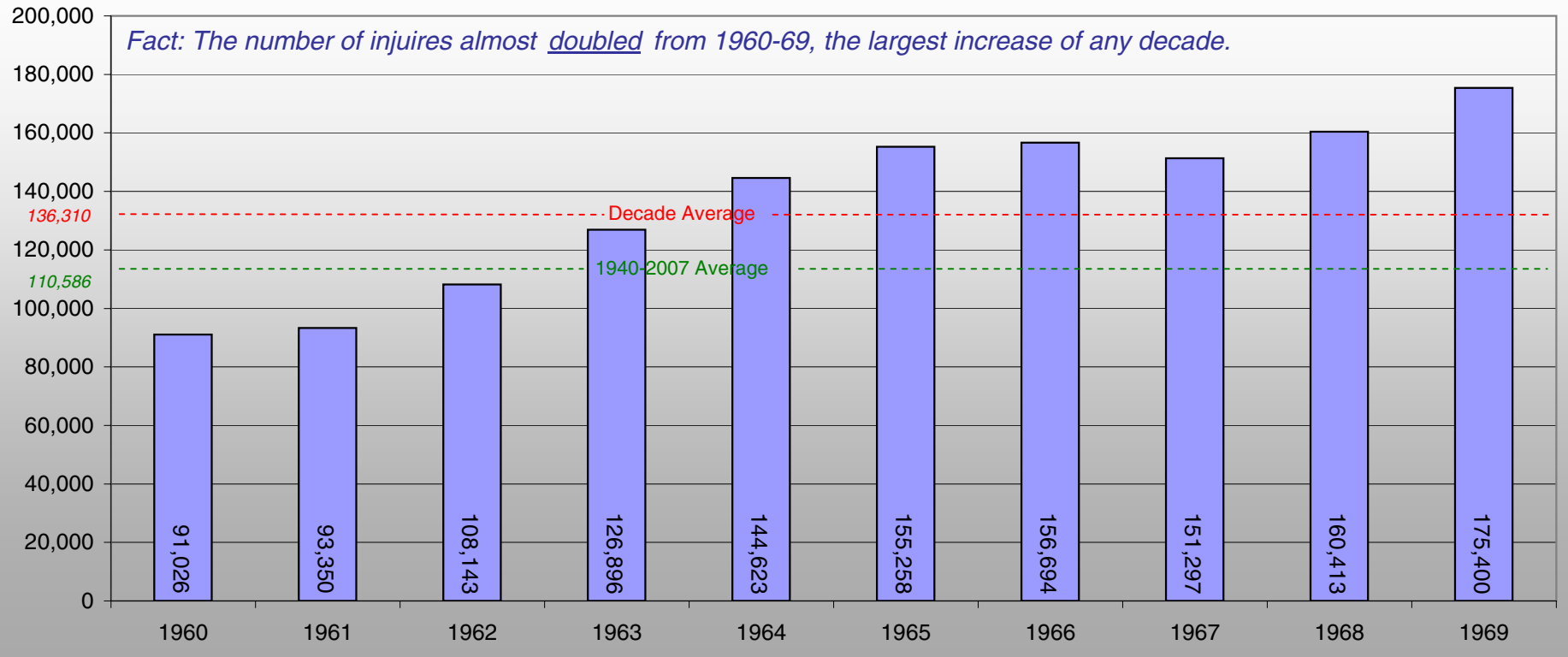
1940-2007 MICHIGAN TRANSPORTATION HISTORY



1940-2007 MICHIGAN TRANSPORTATION HISTORY



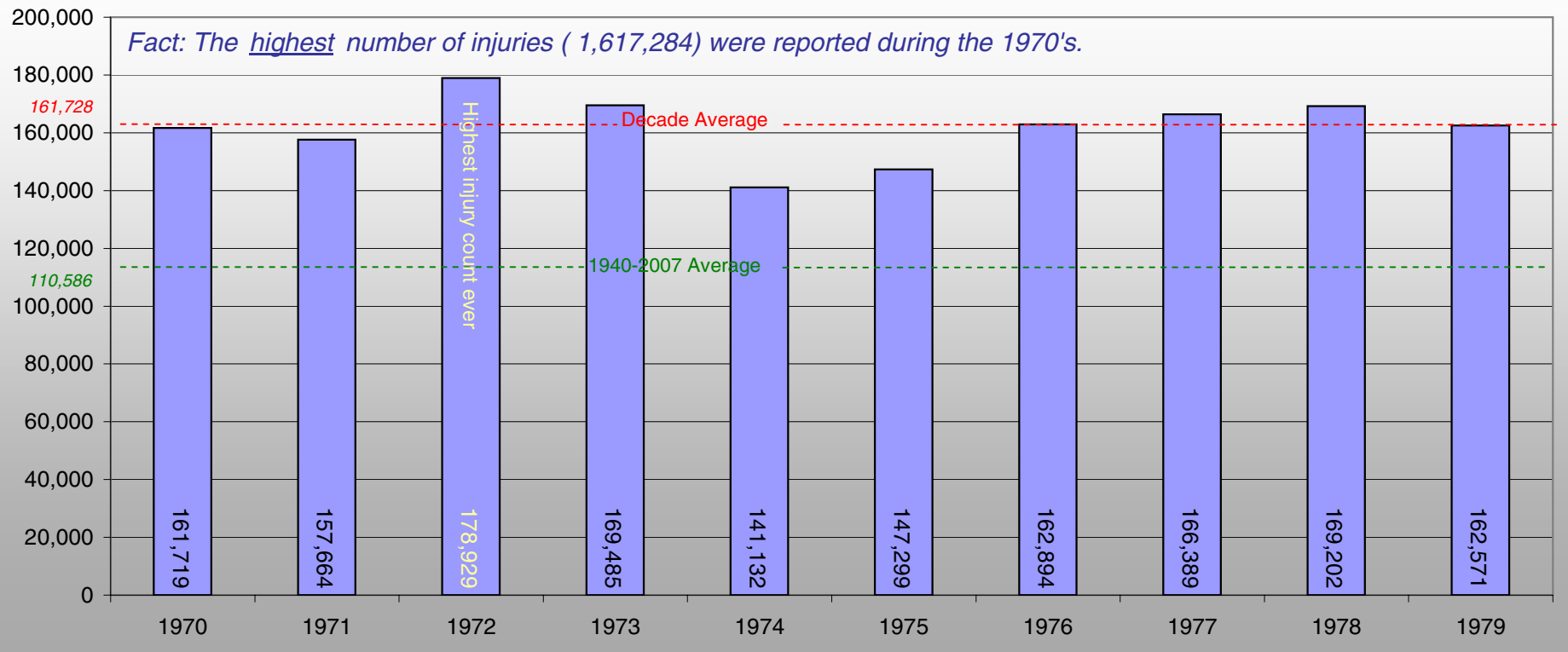
1960-1969 Michigan Injuries



1940-2007 MICHIGAN TRANSPORTATION HISTORY



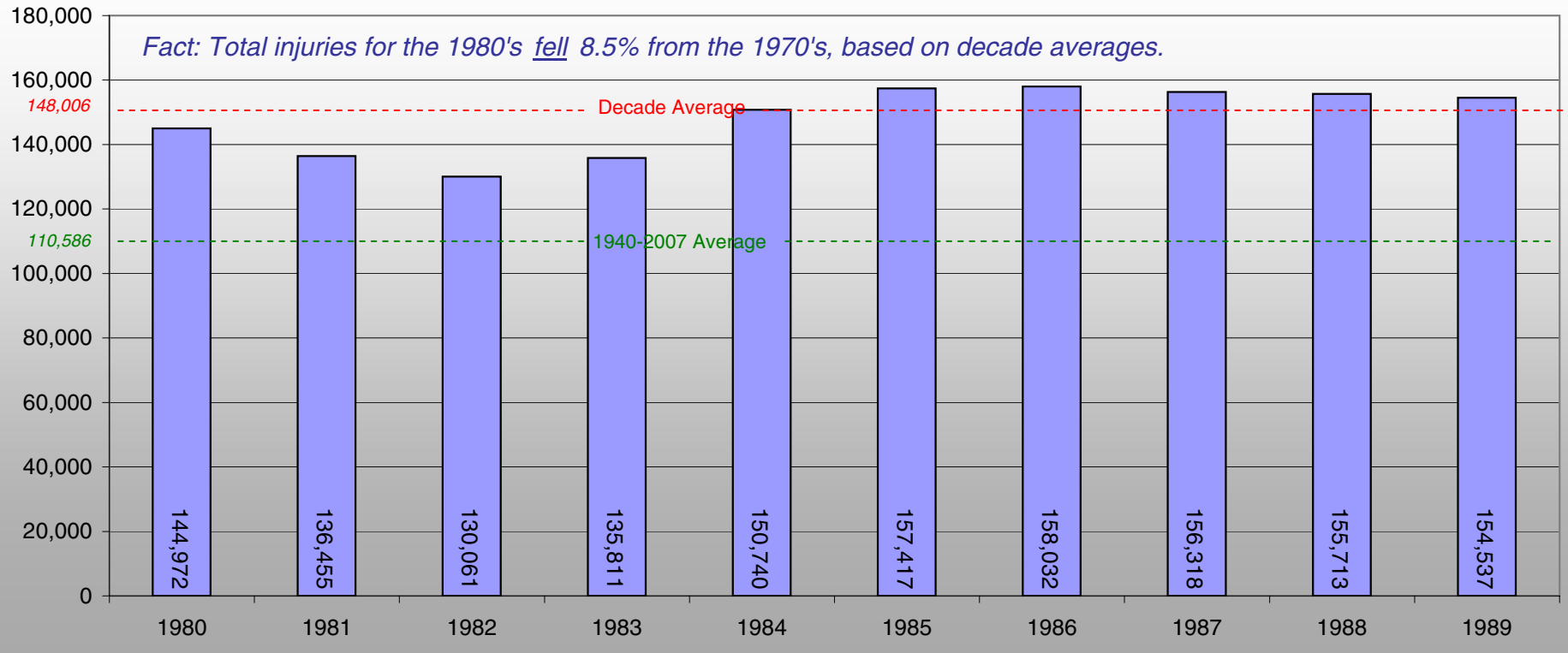
1970-1979 Michigan Injuries



1940-2007 MICHIGAN TRANSPORTATION HISTORY



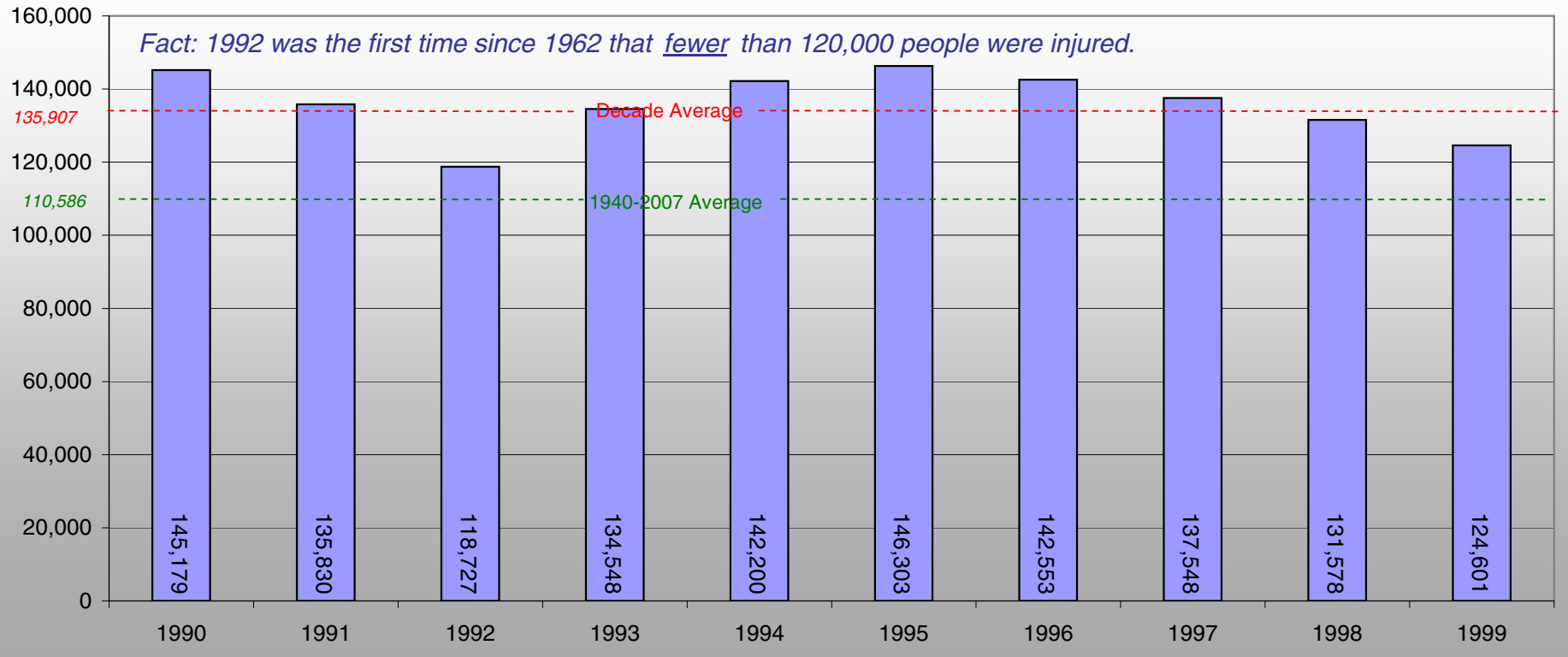
1980-1989 Michigan Injuries



1940-2007 MICHIGAN TRANSPORTATION HISTORY



1990-1999 Michigan Injuries



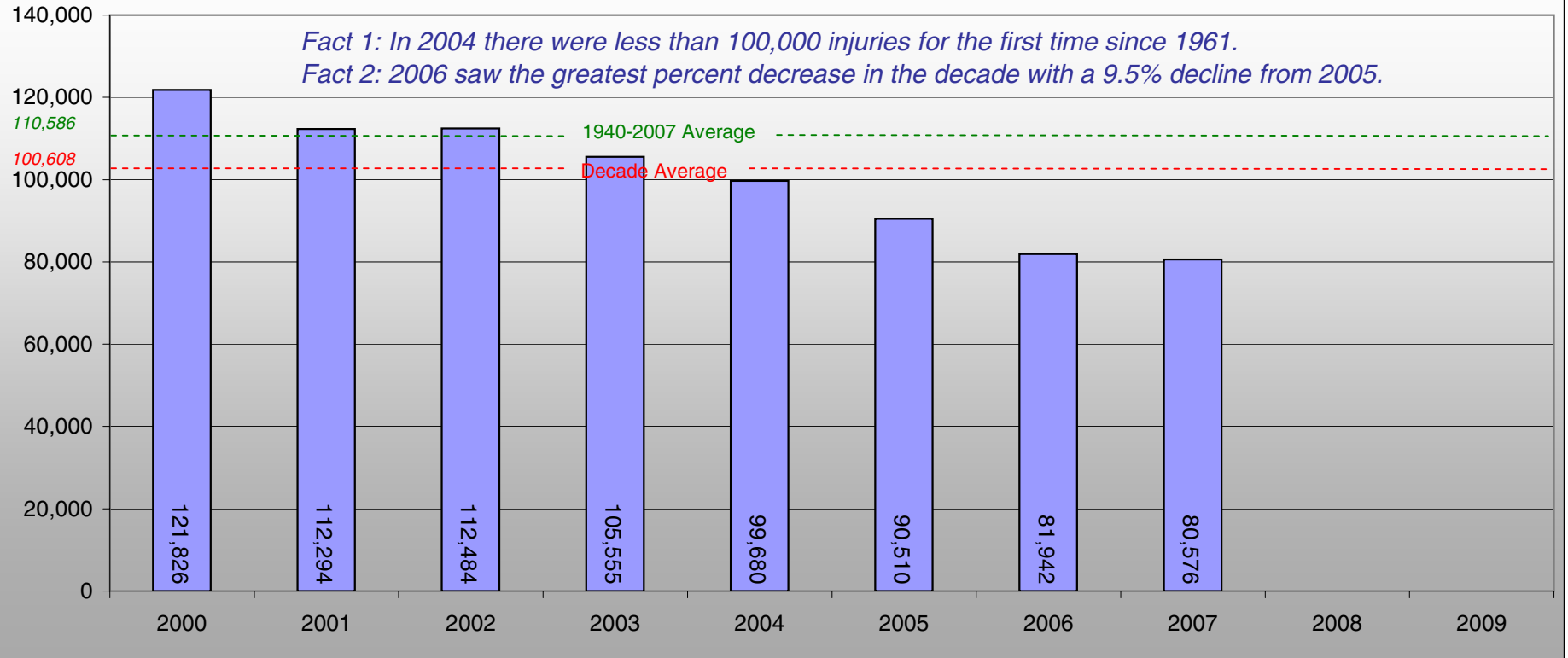
1940-2007 MICHIGAN TRANSPORTATION HISTORY



2000-2007 Michigan Injuries

Fact 1: In 2004 there were less than 100,000 injuries for the first time since 1961.

Fact 2: 2006 saw the greatest percent decrease in the decade with a 9.5% decline from 2005.



1940-2007 MICHIGAN TRANSPORTATION HISTORY

Year	Crashes	Fatalities	Injuries	Pop.	Reg. Veh	VMT
1940	116,154	1,730	34,247	5.3	1.6	15.1
1941	133,236	2,133	40,708	5.4	1.7	17.0
1942	100,125	1,325	28,967	5.5	1.6	13.9
1943	71,450	992	21,988	5.4	1.5	10.5
1944	72,013	1,034	23,401	5.5	1.5	10.7
1945	83,160	1,150	27,755	5.5	1.5	11.9
1946	110,631	1,470	34,479	5.9	1.6	16.1
1947	137,619	1,447	38,195	6.1	1.8	17.6
1948	140,172	1,512	40,892	6.2	2.0	19.1
1949	143,197	1,441	41,197	6.3	2.2	19.9
1950	161,750	1,605	45,734	6.4	2.4	21.5
1951	176,587	1,640	48,418	6.5	2.6	22.6
1952	160,829	1,736	49,119	6.6	2.6	23.1
1953	184,174	1,905	57,834	6.8	2.8	25.3
1954	185,534	1,793	56,444	7.0	2.9	26.0
1955	196,812	2,016	62,234	7.3	3.1	28.2
1956	197,995	1,746	61,158	7.5	3.2	28.4
1957	191,915	1,548	60,067	7.6	3.3	29.2
1958	177,934	1,382	57,767	7.7	3.2	29.4
1959	198,771	1,473	64,873	7.8	3.3	30.1
1960	209,724	1,604	91026	7.8	3.4	31.8
1961	199,973	1,567	93,350	7.9	3.4	32.1
1962	233,078	1,574	108,143	7.9	3.5	34.5
1963	261,794	1,887	126,896	8.0	3.6	36.4
1964	284,444	2,122	144,623	8.2	3.8	38.6
1965	310,598	2,136	155,258	8.3	4.1	40.8
1966	302,880	2,298	156,694	8.5	4.1	43.9
1967	299,004	2,137	151,297	8.6	4.2	45.0
1968	305,495	2,392	160,413	8.7	4.3	48.0
1969	331,223	2,487	175,400	8.8	4.6	50.1
1970	313,715	2,177	161,719	8.8	4.7	53.1
1971	314,015	2,152	157,664	8.9	4.8	55.5
1972	359,745	2,258	178,929	9.0	5.2	57.8
1973	350,864	2,213	169,485	9.1	5.4	58.4
1974	324,763	1,875	141,132	9.1	5.7	55.7

Year	Crashes	Fatalities	Injuries	Pop.	Reg. Veh	VMT
1975	333,560	1,811	147,299	9.1	5.7	56.2
1976	365,600	1,955	162,894	9.1	5.9	61.3
1977	374,751	1,950	166,389	9.2	6.1	64.8
1978	389,193	2,076	169,202	9.2	6.4	67.3
1979	366,435	1,849	162,571	9.2	6.5	64.8
1980	314,594	1,774	144,972	9.3	6.6	61.1
1981	302,831	1,589	136,455	9.2	6.1	62.0
1982	294,971	1,417	130,061	9.1	6.4	61.3
1983	300,797	1,331	135,811	9.0	6.4	63.5
1984	335,193	1,556	150,740	9.0	6.5	65.7
1985	386,904	1,569	157,417	9.1	6.8	68.4
1986	400,694	1,632	158,032	9.1	7.0	70.6
1987	397,224	1,632	156,318	9.2	7.1	75.7
1988	410,437	1,704	155,713	9.2	7.2	77.7
1989	417,252	1,630	154,537	9.3	7.2	79.9
1990	387,180	1,563	145,179	9.3	7.3	81.2
1991	364,847	1,425	135,830	9.3	7.3	81.9
1992	344,942	1,300	118,727	9.4	7.4	84.0
1993	363,636	1,414	134,548	9.5	7.5	85.7
1994	398,050	1,419	142,200	9.5	7.6	85.6
1995	421,073	1,537	146,303	9.6	7.7	85.7
1996	435,477	1,505	142,553	9.6	8.1	87.7
1997	425,793	1,446	137,548	9.8	8.1	89.2
1998	403,766	1,367	131,578	9.8	8.2	91.6
1999	415,675	1,386	124,601	9.9	8.6	93.1
2000	424,852	1,382	121,826	9.9	8.8	94.9
2001	400,813	1,328	112,294	10.0	8.9	96.4
2002	395,515	1,279	112,484	10.0	9.0	98.2
2003	391,485	1,283	105,555	10.08	9.1	100.2
2004	373,028	1,159	99,680	10.11	9.1	101.8
2005	350,838	1,129	90,510	10.12	9.3	103.2
2006	315,322	1,084	81,942	10.10	9.5	104.0
2007	324,174	1,084	80,576	10.07	8.4	104.6
2008	Population=Millions					
2009	Reg. Vehicles=Millions					
	VMT=Billions					