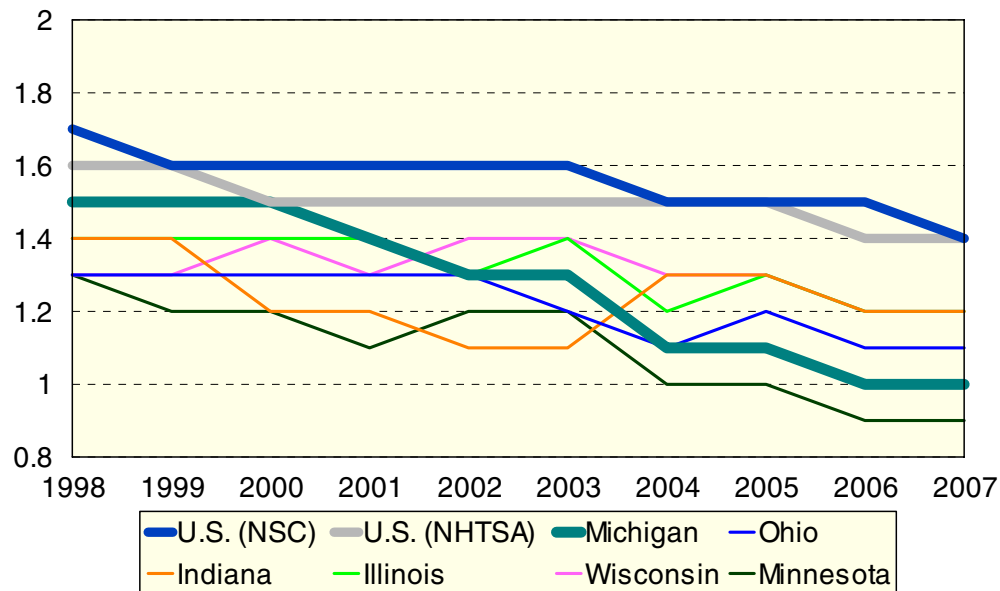


10 YEAR

MILEAGE DEATH RATES 1998 - 2007

Comparison - Michigan to U.S. and Surrounding States

Updated February 6, 2009



	U.S. (NSC*)	U.S. (NHTSA*)	Michigan	Ohio	Indiana	Illinois	Wisconsin	Minnesota
1998	1.7	1.6	1.5	1.3	1.4	1.4	1.3	1.3
1999	1.6	1.6	1.5	1.3	1.4	1.4	1.3	1.2
2000	1.6	1.5	1.5	1.3	1.2	1.4	1.4	1.2
2001	1.6	1.5	1.4	1.3	1.2	1.4	1.3	1.1
2002	1.6	1.5	1.3	1.3	1.1	1.3	1.4	1.2
2003	1.6	1.5	1.3	1.2	1.1	1.4	1.4	1.2
2004	1.5	1.5	1.1	1.1	1.3	1.2	1.3	1.0
2005	1.5	1.5	1.1	1.2	1.3	1.3	1.3	1.0
2006	1.5	1.4	1.0	1.1	1.2	1.2	1.2	0.9
2007	1.4	1.4	1.0	1.1	1.2	1.2	1.2	0.9

* National Safety Council (NSC) reports traffic and nontraffic deaths within a year of the accident. National Highway Traffic Safety Administration (NHTSA) reports only traffic deaths that occur within 30 days of the accident.

U.S. data for this table and tables on the following page were provided by the National Safety Council [3], the National Highway Traffic Safety Administration [4], and the Federal Highway Administration [5]. State data for this table and tables on the following page were provided by Ohio [6], Indiana [7], Illinois [8], Wisconsin [9], and Minnesota [10].